

College Profile Report: College of Agriculture, 2011-2012

Note: Most increases or decreases in 2003-04 are due to the merger of the School of Human Environmental Sciences with the College of Agriculture; caution should be exercised in interpreting trends.

PRODUCTIVITY ANALYSIS

INSTRUCTIONAL RATIOS					
Academic Year	Inst. Exp per SCH	Total Exp per SCH	SCH Generated per FT Instructional Faculty**	Majors per FT EEO Faculty	Degrees per FT EEO Faculty
2011-12	\$263	N/A	269	15.6	3.5
2010-11	\$269	N/A	262	14.8	3.3
2009-10	\$250	N/A	243	13.2	2.9
2008-09	\$242	N/A	250	12.9	3.1
2007-08	\$238	N/A	253	12.9	3.2
2006-07	\$218	N/A	264	13.1	3.1
2005-06	\$206	N/A	259	12.6	2.8
2004-05	\$187	N/A	272	12.1	2.8
2003-04	\$189	N/A	257	12.4	2.8
2002-03	\$122	N/A	287	9.5	1.8

* Unrestricted

** Excludes Extension Faculty

SPONSORED PROJECT / RESEARCH RATIOS					
Academic Year	Proposals per FT EEO Faculty	Awards per FT EEO Faculty	Federal Exp. per FT EEO Faculty	Total Exp. per FT EEO Faculty	Indirect Cost as % of Total Research Expenditures
2011-12	1.4	\$87,028	\$52,780	\$71,713	12.3%
2010-11	1.6	\$126,223	\$58,777	\$77,641	12.7%
2009-10	1.5	\$129,136	\$50,498	\$72,136	13.9%
2008-09	1.4	\$89,584	\$41,365	\$68,068	12.4%
2007-08	1.3	\$117,764	\$44,981	\$61,597	13.1%
2006-07	1.3	\$120,644	\$50,648	\$69,728	11.0%
2005-06	1.4	\$122,676	\$47,681	\$64,965	11.9%
2004-05	1.1	\$88,988	\$42,068	\$56,720	11.0%
2003-04	1.1	\$84,079	\$38,321	\$55,212	11.1%
2002-03	1.0	\$68,115	\$29,871	\$47,315	9.3%

SPACE UTILIZATION RATIOS				
Academic Year	Federal Research Exp per Research NASF	Research NASF per FT EEO Faculty	%Class Start Times not Prime Time (9-3)	% Class Hours on Friday
2011-12	\$55	965	32.6%	11.0%
2010-11	\$58	1,007	31.0%	12.3%
2009-10	\$51	988	30.1%	11.8%
2008-09	\$42	984	36.1%	10.9%
2007-08	\$45	993	33.4%	9.5%
2006-07	\$47	1,084	34.4%	8.7%
2005-06	\$44	1,086	34.2%	11.3%
2004-05	\$43	970	33.3%	9.8%
2003-04	\$41	931	31.2%	10.5%
2002-03	\$33	909	28.9%	13.3%

DOE ANALYSIS: Distributes Unrestricted Expenditure to Instruction and Research based on overall DOE percentages		
Academic Year	Expenditure per SCH	Expenditure per Award Dollar
2011-12	\$539	\$2.32
2010-11	\$529	\$1.54
2009-10	\$525	\$1.41
2008-09	\$527	\$2.01
2007-08	\$507	\$1.55
2006-07	\$452	\$1.42
2005-06	\$481	\$1.36
2004-05	\$388	\$1.66
2003-04	\$365	\$1.67
2002-03	\$298	\$2.25

College Profile Report: College of Agriculture, 2011-2012

Note: Most increases or decreases in 2003-04 are due to the merger of the School of Human Environmental Sciences with the College of Agriculture; caution should be exercised in interpreting trends.

DIVERSITY SCORECARD									
Academic Year	Students as % of total			Faculty as % of total			Administrative/Executive/Managerial as % of total		
	Black, nonHispanic	Other Minorities	International Student	Female	Black, nonHispanic	Other Minorities	Female	Black, nonHispanic	Other Minorities
Undergraduates									
2011-12	7.5%	3.6%	1.1%	28.0%	2.4%	6.3%	36.1%	5.6%	0.0%
2010-11	9.0%	2.8%	1.1%	26.6%	2.7%	5.5%	32.4%	5.4%	0.0%
2009-10	9.6%	2.6%	0.9%	26.8%	3.4%	5.7%	36.1%	2.8%	0.0%
2008-09	9.1%	2.7%	0.8%	27.4%	3.0%	5.3%	28.1%	9.4%	0.0%
2007-08	6.8%	2.3%	0.4%	24.3%	2.7%	7.2%	34.5%	10.3%	0.0%
2006-07	6.2%	1.8%	0.8%	23.4%	2.7%	7.3%	31.0%	10.3%	0.0%
2005-06	5.7%	1.9%	0.6%	21.4%	3.1%	6.2%	25.9%	7.4%	0.0%
2004-05	5.9%	2.2%	0.5%	20.8%	3.8%	4.2%	16.7%	0.0%	0.0%
2003-04	5.7%	2.0%	0.4%	21.5%	3.3%	4.0%	30.0%	3.3%	0.0%
2002-03	3.0%	2.3%	0.5%	15.3%	1.6%	2.4%	30.0%	3.3%	0.0%
Graduate Students									
2011-12	2.6%	2.9%	27.6%						
2010-11	4.0%	3.0%	24.9%						
2009-10	4.6%	4.3%	24.1%						
2008-09	3.6%	3.4%	26.0%						
2007-08	3.3%	3.6%	27.4%						
2006-07	4.5%	1.6%	26.8%						
2005-06	4.7%	1.8%	26.8%						
2004-05	4.5%	1.0%	27.1%						
2003-04	5.4%	0.2%	26.2%						
2002-03	3.5%	0.6%	32.2%						
Doctor's Degree Professional Practice									
2011-12	N/A	N/A	N/A						
2010-11	N/A	N/A	N/A						
2009-10	N/A	N/A	N/A						
2008-09	N/A	N/A	N/A						
2007-08	N/A	N/A	N/A						
2006-07	N/A	N/A	N/A						
2005-06	N/A	N/A	N/A						
2004-05	N/A	N/A	N/A						
2003-04	N/A	N/A	N/A						
2002-03	N/A	N/A	N/A						
Postdoctoral Fellow									
2011-12	0.0%	6.3%	70.8%						
2010-11	0.0%	8.3%	66.7%						
2009-10	0.0%	9.5%	61.9%						
2008-09	4.8%	12.9%	48.4%						
2007-08	0.0%	11.5%	48.1%						
2006-07	0.0%	5.5%	56.2%						
2005-06	0.0%	2.9%	61.8%						
2004-05	0.0%	1.4%	63.9%						
2003-04	0.0%	3.7%	57.4%						
2002-03	0.0%	2.5%	80.0%						

College Profile Report: College of Agriculture, 2011-2012

Note: Most increases or decreases in 2003-04 are due to the merger of the School of Human Environmental Sciences with the College of Agriculture; caution should be exercised in interpreting trends.

FIVE-YEAR TRENDS

DATA Element	5-Year Increase	Percent of Provost Totals		DATA Element	5-Year Increase	Percent of Provost Totals	
		06-07	11-12			06-07	11-12
Unrestricted Expenditure	14.3%	N/A	N/A	Proposals Submitted	7.9%	N/A	N/A
Full-Time EEO Faculty	-2.7%	N/A	N/A	Sponsored Project Awards	-29.8%	N/A	N/A
Average Faculty Salary	12.2%	N/A	N/A	Federal Research Exp.	1.4%	N/A	N/A
Total Majors	14.1%	N/A	N/A	Black, nonHispanic Faculty	-1	N/A	N/A
SCH Generated	-2.9%	N/A	N/A	Women Faculty	16.4%	N/A	N/A
Degrees Awarded	6.7%	N/A	N/A	Black, nonHispanic Students	31.8%	N/A	N/A

RESOURCES

ACTUAL EXPENDITURE

Academic Year	Unrestricted Total	Unrestricted by PCS Code			Restricted Funds	Auxiliary Service	Affiliated Corporation	Total
		Instruction	Research	Service				
2011-12	\$113,534,386	\$12,396,490	\$35,930,143	\$63,115,315	\$6,151,418	\$2,900,429	\$502,150	\$123,088,384
2010-11	\$110,232,477	\$12,580,431	\$34,442,568	\$60,928,512	\$6,565,248	\$2,639,678	\$737,871	\$120,175,274
2009-10	\$106,839,746	\$11,331,382	\$34,138,903	\$59,589,518	\$6,745,764	\$2,583,788	\$842,561	\$117,011,859
2008-09	\$105,893,219	\$11,243,538	\$34,192,695	\$58,408,182	\$6,446,247	\$2,317,609	\$687,047	\$115,344,123
2007-08	\$106,600,789	\$11,199,737	\$34,439,437	\$59,119,970	\$5,723,642	\$1,700,842	\$2,698,745	\$116,724,018
2006-07	\$99,286,812	\$10,587,670	\$32,191,361	\$54,924,304	\$4,685,726	\$1,973,098	\$470,898	\$106,416,535
2005-06	\$96,067,271	\$9,745,120	\$31,038,158	\$54,064,970	\$4,673,493	\$1,854,071	\$5,688,997	\$108,283,832
2004-05	\$89,466,048	\$9,069,843	\$29,763,481	\$49,647,637	\$8,794,762	\$1,856,333	\$573,747	\$100,690,890
2003-04	\$88,569,584	\$8,911,702	\$28,069,775	\$50,792,065	\$5,791,516	\$1,806,187	\$737,433	\$96,904,720
2002-03	\$84,541,423	\$5,288,038	\$28,294,681	\$50,299,095	\$5,554,716	\$1,638,327	\$571,323	\$92,305,789

FACULTY

Academic Year	FT Inst. Faculty	FT EEO Faculty	Ave FT Inst.* Fac. Salary	Extension Faculty
2010-11	179	256	\$77,380	69
2009-10	187	265	\$76,303	70
2008-09	186	266	\$76,124	71
2007-08	186	263	\$75,141	70
2006-07	184	261	\$71,360	69
2005-06	183	257	\$69,004	69
2004-05	178	264	\$66,859	80
2003-04	183	274	\$65,440	86
2002-03	151	248	\$63,795	91

UNRESTRICTED TOTAL

Academic Year	UNRESTRICTED TOTAL			Total
	8A Instruction	81 Research	82 Extension	
2011-12	\$12,396,490	\$35,353,135	\$65,207,754	\$112,957,379
2010-11	\$12,580,431	\$34,434,574	\$63,209,479	\$110,224,484
2009-10	\$11,331,382	\$34,138,903	\$61,369,461	\$106,839,746
2008-09	\$11,243,538	\$34,192,695	\$60,456,986	\$105,893,219
2007-08	\$11,199,737	\$34,439,437	\$60,961,614	\$106,600,788
2006-07	\$10,587,670	\$32,191,361	\$56,507,780	\$99,286,811
2005-06	\$10,964,143	\$31,038,158	\$54,064,970	\$96,067,271
2004-05	\$10,054,930	\$29,763,481	\$49,647,637	\$89,466,048
2003-04	\$9,729,607	\$36,199,484	\$42,640,493	\$88,569,584
2002-03	\$5,965,388	\$36,471,162	\$42,104,873	\$84,541,423

* 9-month converted salary as computed for IPEDS instructional faculty salary.

** FT Inst. Faculty - Beginning in fall 2001, extension faculties were excluded and lecturers were included in the instructional faculty cohort.

DISTRIBUTION OF EFFORT

Academic Year	Number	DISTRIBUTION OF EFFORT			
		Instruction	Research	Service	Admin/ Prof Dev
2011-12	254	22.4	45.2	27.6	4.8
2010-11	256	22.5	45.1	27.6	4.8
2009-10	265	22.3	45.3	27.7	4.7
2008-09	266	23.1	45.1	27.7	4.1
2007-08	263	22.4	45.0	28.4	4.2
2006-07	261	22.1	45.1	27.8	4.9
2005-06	257	23.7	44.5	28.5	3.4
2004-05	264	21.0	43.7	31.7	3.6
2003-04	274	19.4	43.4	33.7	3.6
2002-03	248	15.3	45.0	37.8	1.9

DOE UNRESTRICTED EXPENDITURE DISTRIBUTION

Academic Year	DOE UNRESTRICTED EXPENDITURE DISTRIBUTION	
	Instruction	Research
2011-12	\$25,431,702	\$51,317,542
2010-11	\$24,791,284	\$49,747,917
2009-10	\$23,843,212	\$48,380,669
2008-09	\$24,461,228	\$47,795,858
2007-08	\$23,878,577	\$47,970,355
2006-07	\$21,942,386	\$44,778,352
2005-06	\$22,767,943	\$42,749,936
2004-05	\$18,787,870	\$39,096,663
2003-04	\$17,182,499	\$38,439,199
2002-03	\$12,934,838	\$38,043,640

College Profile Report: College of Agriculture, 2011-2012

Note: Most increases or decreases in 2003-04 are due to the merger of the School of Human Environmental Sciences with the College of Agriculture; caution should be exercised in interpreting trends.

FROM FALL 2002 (10TH ROW) to FALL 2011 SPACE INVENTORY (NET ASSIGNABLE SQUARE FEET- NASF)										
Class Rooms	Labs									
	Class	Research	Office	Study	Special	General	Support	Health	Residence	Total
8,100	26,477	245,118	995,271	9,822	866,433	129,642	139,018	26,289	172,841	2,619,011
6,920	21,557	257,777	915,051	7,898	844,010	121,674	138,429	15,592	172,886	2,501,794
5,517	13,081	261,862	857,310	7,565	660,358	90,212	283,291	15,316	181,717	2,376,229
5,517	13,081	261,862	176,920	7,565	660,358	90,212	283,291	15,316	181,717	1,695,839
4,650	18,609	261,140	195,588	12,878	660,523	90,988	287,173	15,316	182,640	1,729,505
3,840	16,002	283,047	185,385	13,046	563,588	90,025	332,840	2,567	178,627	1,668,967
3,840	25,350	279,035	187,001	13,046	562,268	93,755	261,983	2,567	169,227	1,598,072
3,450	16,699	256,134	166,335	11,507	586,965	96,582	253,148	1,800	172,521	1,565,141
3,381	20,249	255,168	167,716	13,758	588,508	96,386	249,769	2,364	171,871	1,569,170
3,381	16,621	225,401	142,185	11,955	576,633	90,472	242,464	1,800	159,577	1,470,489

* Excludes Free Space

REVENUE SOURCES				
Academic Year	Tuition	Endowment Market Value	Private Giving	Tuition as % Unrestr. Exp.
2011-12	\$18,058,976	\$82,459,195	\$5,021,390	N/A
2010-11	\$17,102,140	\$84,729,489	\$4,852,546	N/A
2009-10	\$15,526,415	\$73,578,548	\$6,424,774	N/A
2008-09	\$14,743,594	\$68,233,472	\$5,958,057	N/A
2007-08	\$13,995,970	\$89,731,117	\$4,207,395	N/A
2006-07	\$13,285,847	\$96,733,643	\$5,085,954	N/A
2005-06	\$11,551,385	\$81,885,152	\$11,245,447	N/A
2004-05	\$10,568,700	\$67,626,069	\$5,388,438	N/A
2003-04	\$8,865,591	\$61,357,904	\$5,020,002	N/A
2002-03	\$3,671,153	\$50,680,214	\$4,125,480	N/A

The 2007-08 PRIVATE GIVING total may vary from year to year as adjustments are made.

College Profile Report: College of Agriculture, 2011-2012

Note: Most increases or decreases in 2003-04 are due to the merger of the School of Human Environmental Sciences with the College of Agriculture; caution should be exercised in interpreting trends.

INSTRUCTIONAL OUTCOMES

ATTEMPTED STUDENT CREDIT HOURS						DEGREES AWARDED				
Academic Year	100-499(G)	500-599	600-799	800-999	Total	B	M/S	D_Research	D_Prof	Total
2011-12	38,305	3,516	3,529	1,799	47,149	533	67	39	0	639
2010-11	38,256	3,645	3,335	1,591	46,827	537	59	27	0	623
2009-10	36,945	3,495	3,323	1,637	45,400	484	56	29	0	569
2008-09	37,924	3,397	3,454	1,661	46,436	513	73	24	0	610
2007-08	37,465	4,195	3,532	1,931	47,123	547	58	19	0	624
2006-07	38,730	4,276	3,652	1,901	48,559	489	77	33	0	599
2005-06	37,260	4,551	3,650	1,884	47,345	442	57	22	0	521
2004-05	38,148	4,723	3,841	1,728	48,440	394	84	30	0	508
2003-04	37,084	4,453	3,888	1,671	47,096	418	69	33	0	520
2002-03	34,450	4,114	3,454	1,388	43,406	213	60	16	0	289

*Academic year: Fall, Spring, Summer

*Courses historically offered in other colleges are mapped to the current college.

OVERALL RETENTION		
Academic Year	1st to 2nd Year Retention in: University ¹	College ²
2011-12	82.5	69.6
2010-11	79.5	64.7
2009-10	82.2	72.8
2008-09	81.8	74.8
2007-08	73.6	66.7
2006-07	76.4	65.0
2005-06	83.1	74.3
2004-05	78.6	69.3
2003-04	74.4	66.3
2002-03	82.0	68.9

MAJORS					
Fall Semester	B	M/S	D_Research	D_Prof	Total
2011-12	2,446	218	198	0	2,862
2010-11	2,372	211	187	0	2,770
2009-10	2,185	206	188	0	2,579
2008-09	2,130	207	178	0	2,515
2007-08	2,096	219	175	0	2,490
2006-07	2,129	219	161	0	2,509
2005-06	1,985	217	167	0	2,369
2004-05	1,801	251	169	0	2,221
2003-04	1,913	256	168	0	2,337
2002-03	1,155	184	155	0	1,494

¹ Percentage of cohort entering college that returned to University

² Percentage of cohort entering college that returned to college

GRADUATING SENIOR SURVEYS								
Academic Years	Quality of instruction by Faculty in Major		My advisor is someone I would recommend to other students		Required courses were offered so that I could complete my degree on time		I would recommend my major program to other students	
	Responses	Average ¹	Responses	Average ²	Responses	Average ²	Responses	Average ²
	2009-12	906	3.4	908	3.8	914	3.9	915
2008-11	1,075	3.4	1,077	3.8	1,078	3.8	1,078	4.2
2007-10	1,147	3.4	1,144	3.9	1,146	3.8	1,145	4.3
2006-09	897	3.4	895	3.9	897	3.7	896	4.3
2005-08	1,031	3.4	1,028	4.0	1,029	3.7	1,028	4.3
2004-07	1,001	3.5	998	4.0	999	3.7	999	4.2
2003-06	951	3.4	948	4.0	948	3.7	947	4.2
2000-03	678	3.5	676	3.4	678	3.1	676	3.5
1999-02	653	3.6	652	3.4	653	3.1	653	3.5
1998-01	516	3.6	513	3.4	513	3.2	513	3.6

¹ Scale: Four-point Scale: Poor=1 Fair=2 Good=3 Excellent=4.

² Scale: Increases in 2004 are due to a change in the scale. In previous years a four-point scale was used.

For 2004 data, a five-point scale was used: Strongly disagree=1 Disagree=2 Not sure=3 Agree=4 Strongly agree=5.

College Profile Report: College of Agriculture, 2011-2012

Note: Most increases or decreases in 2003-04 are due to the merger of the School of Human Environmental Sciences with the College of Agriculture; caution should be exercised in interpreting trends.

SPONSORED PROJECTS AND EXPENDITURES

SPONSORED PROJECTS		
Academic Year	Proposals Submitted	Awards Total
2011-12	367	\$22,105,234
2010-11	407	\$32,312,992
2009-10	386	\$34,221,048
2008-09	373	\$23,829,306
2007-08	337	\$30,972,002
2006-07	340	\$31,488,174
2005-06	347	\$31,527,814
2004-05	296	\$23,492,755
2003-04	315	\$23,037,707
2002-03	240	\$16,892,430

RESEARCH				
Academic Year	Federal Res. Expenditure	Total Research Expenditure		
		Indirect	Direct	All
2011-12	\$13,406,000	\$2,240,000	\$15,975,000	\$18,215,000
2010-11	\$15,047,000	\$2,529,000	\$17,346,000	\$19,876,000
2009-10	\$13,382,000	\$2,666,000	\$16,450,000	\$19,116,000
2008-09	\$11,003,000	\$2,250,000	\$15,857,000	\$18,106,000
2007-08	\$11,830,000	\$2,120,000	\$14,081,000	\$16,200,000
2006-07	\$13,219,000	\$2,003,000	\$16,196,000	\$18,199,000
2005-06	\$12,254,000	\$1,987,000	\$14,710,000	\$16,696,000
2004-05	\$11,106,000	\$1,645,000	\$13,329,000	\$14,974,000
2003-04	\$10,500,000	\$1,682,000	\$13,446,000	\$15,128,000
2002-03	\$7,408,000	\$1,087,000	\$10,647,000	\$11,734,000

INSTRUCTION				
Academic Year	Federal Ins. Expenditure	Total Instruction Expenditure		
		Indirect	Direct	All
2011-12	\$52,000	\$10,000	\$95,000	\$104,000
2010-11	\$74,000	\$7,000	\$70,000	\$77,000
2009-10	\$213,000	\$31,000	\$183,000	\$214,000
2008-09	\$261,000	\$39,000	\$229,000	\$267,000
2007-08	\$646,000	\$82,000	\$650,000	\$732,000
2006-07	\$386,000	\$45,000	\$354,000	\$399,000
2005-06	\$405,000	\$47,000	\$391,000	\$438,000
2004-05	\$208,000	\$6,000	\$238,000	\$244,000
2003-04	\$367,000	\$28,000	\$377,000	\$405,000
2002-03	\$122,000	\$2,000	\$135,000	\$137,000

PUBLIC SERVICE				
Academic Year	Federal Pub. Expenditure	Total Public Service Expenditure		
		Indirect	Direct	All
2011-12	\$8,071,000	\$817,000	\$9,906,000	\$10,723,000
2010-11	\$7,767,000	\$671,000	\$8,928,000	\$9,599,000
2009-10	\$7,204,000	\$679,000	\$9,053,000	\$9,732,000
2008-09	\$6,194,000	\$604,000	\$7,635,000	\$8,239,000
2007-08	\$5,434,000	\$343,000	\$6,769,000	\$7,111,000
2006-07	\$5,273,000	\$260,000	\$6,683,000	\$6,943,000
2005-06	\$4,217,000	\$239,000	\$5,626,000	\$5,866,000
2004-05	\$3,128,000	\$167,000	\$4,403,000	\$4,570,000
2003-04	\$1,993,000	\$108,000	\$2,861,000	\$2,969,000
2002-03	\$1,865,000	\$177,000	\$2,277,000	\$2,453,000

TOTAL EXPENDITURE				
Academic Year	Federal Expenditure	Total Expenditure		
		Indirect	Direct	All
2011-12	\$21,529,000	\$3,066,000	\$25,976,000	\$29,042,000
2010-11	\$22,889,000	\$3,208,000	\$26,344,000	\$29,552,000
2009-10	\$20,798,000	\$3,375,000	\$25,685,000	\$29,060,000
2008-09	\$17,458,000	\$2,892,000	\$23,718,000	\$26,610,000
2007-08	\$17,926,000	\$2,547,000	\$21,573,000	\$24,120,000
2006-07	\$18,895,000	\$2,310,000	\$23,301,000	\$25,611,000
2005-06	\$16,876,000	\$2,273,000	\$20,727,000	\$23,000,000
2004-05	\$14,442,000	\$1,819,000	\$17,970,000	\$19,789,000
2003-04	\$12,917,000	\$1,818,000	\$16,741,000	\$18,559,000
2002-03	\$9,395,000	\$1,265,000	\$13,060,000	\$14,325,000

College Profile Report: College of Agriculture, 2011-2012

Note: Most increases or decreases in 2003-04 are due to the merger of the School of Human Environmental Sciences with the College of Agriculture; caution should be exercised in interpreting trends.

DIVERSITY OUTCOMES

Fall Semester	White	Black, nonHispanic	Asian Pacific	Hispanic	American Indian	Not Reported	Nonresident Alien	Two or More Races	Total	Total Female
Administrative/Executive/Managerial										
2011-12	34	2	0	0	0	0	0	0	36	13
2010-11	35	2	0	0	0	0	0	0	37	12
2009-10	35	1	0	0	0	0	0	0	36	13
2008-09	29	3	0	0	0	0	0	0	32	9
2007-08	26	3	0	0	0	0	0	0	29	10
2006-07	26	3	0	0	0	0	0	0	29	9
2005-06	25	2	0	0	0	0	0	0	27	7
2004-05	18	0	0	0	0	0	0	0	18	3
2003-04	29	1	0	0	0	0	0	0	30	9
2002-03	29	1	0	0	0	0	0	0	30	9
FT EEO Faculty										
2011-12	227	6	14	2	0	0	4	1	254	71
2010-11	231	7	14	0	0	0	4	0	256	68
2009-10	234	9	15	0	0	0	7	0	265	71
2008-09	236	8	14	0	0	0	8	0	266	73
2007-08	237	7	19	0	0	0	0	0	263	64
2006-07	235	7	18	1	0	0	0	0	261	61
2005-06	233	8	15	1	0	0	0	0	257	55
2004-05	243	10	11	0	0	0	0	0	264	55
2003-04	254	9	10	1	0	0	0	0	274	59
2002-03	238	4	5	1	0	0	0	0	248	38
Undergraduates										
2011-12	2,046	184	39	46	3	70	27	31	2,446	1,480
2010-11	1,997	213	28	36	2	61	25	10	2,372	1,425
2009-10	1,861	209	27	25	5	39	19	N/A	2,185	1,329
2008-09	1825	193	37	17	4	37	17	N/A	2,130	1,292
2007-08	1,850	143	33	10	5	46	9	N/A	2,096	1,267
2006-07	1,907	131	28	7	3	37	16	N/A	2,129	1,251
2005-06	1,788	114	25	11	2	33	12	N/A	1,985	1,135
2004-05	1,617	107	22	13	4	29	9	N/A	1,801	1,047
2003-04	1,734	109	20	12	6	25	7	N/A	1,913	1,149
2002-03	1,077	35	16	9	2	10	6	N/A	1,155	517
Graduate Students										
2011-12	256	11	6	6	0	18	115	4	416	245
2010-11	252	16	6	5	1	17	99	2	398	228
2009-10	249	18	8	8	1	15	95	N/A	394	229
2008-09	244	14	6	6	1	14	100	N/A	385	224
2007-08	240	13	6	7	1	19	108	N/A	394	216
2006-07	238	17	3	3	0	17	102	N/A	380	211
2005-06	237	18	4	3	0	19	103	N/A	384	216
2004-05	262	19	2	2	0	21	114	N/A	420	243
2003-04	264	23	0	0	1	25	111	N/A	424	240
2002-03	203	12	0	2	0	13	109	N/A	339	154
Doctor's Degree Professional Practice										
2011-12	0	0	0	0	0	0	0	0	0	0
2010-11	0	0	0	0	0	0	0	0	0	0
2009-10	0	0	0	0	0	0	0	N/A	0	0
2008-09	0	0	0	0	0	0	0	N/A	0	0
2007-08	0	0	0	0	0	0	0	N/A	0	0
2006-07	0	0	0	0	0	0	0	N/A	0	0
2005-06	0	0	0	0	0	0	0	N/A	0	0
2004-05	0	0	0	0	0	0	0	N/A	0	0
2003-04	0	0	0	0	0	0	0	N/A	0	0
2002-03	0	0	0	0	0	0	0	N/A	0	0
Postdoctoral Fellow										
2011-12	7	0	3	0	0	4	34	0	48	16
2010-11	13	0	5	1	0	5	48	0	72	30
2009-10	13	0	6	0	0	5	39	N/A	63	23
2008-09	14	3	7	1	0	7	30	N/A	62	29
2007-08	3	0	5	1	0	18	25	N/A	52	22
2006-07	5	0	3	1	0	23	41	N/A	73	22
2005-06	9	0	2	0	0	15	42	N/A	68	25
2004-05	9	0	1	0	0	16	46	N/A	72	23
2003-04	5	0	2	0	0	16	31	N/A	54	18
2002-03	5	0	1	0	0	2	32	N/A	40	14

College Profile Report: College of Agriculture, 2010-2011

Note: Most increases or decreases in 2003-04 are due to the merger of the School of Human Environmental Sciences with the College of Agriculture; caution should be exercised in interpreting trends.

PRODUCTIVITY ANALYSIS

INSTRUCTIONAL RATIOS					
Academic Year	Inst. Exp per SCH	Total Exp per SCH	SCH Generated per FT Instructional Faculty**	Majors per FT EEO Faculty	Degrees per FT EEO Faculty
2010-11	\$269	N/A	262	14.8	3.3
2009-10	\$250	N/A	243	13.2	2.9
2008-09	\$242	N/A	250	12.9	3.1
2007-08	\$238	N/A	253	12.9	3.2
2006-07	\$218	N/A	264	13.1	3.1
2005-06	\$206	N/A	259	12.6	2.8
2004-05	\$187	N/A	272	12.1	2.8
2003-04	\$189	N/A	257	12.4	2.8
2002-03	\$122	N/A	287	9.5	1.8
2001-02	\$110	N/A	287	9.2	2.2

* Unrestricted

** Excludes Extension Faculty

SPONSORED PROJECT / RESEARCH RATIOS					
Academic Year	Proposals per FT EEO Faculty	Awards per FT EEO Faculty	Federal Exp. per FT EEO Faculty	Total Exp. per FT EEO Faculty	Indirect Cost as % of Total Research Expenditures
2010-11	1.6	\$126,223	\$58,777	\$77,641	12.7%
2009-10	1.5	\$129,136	\$50,498	\$72,136	13.9%
2008-09	1.4	\$89,584	\$41,365	\$68,068	12.4%
2007-08	1.3	\$117,764	\$44,981	\$61,597	13.1%
2006-07	1.3	\$120,644	\$50,648	\$69,728	11.0%
2005-06	1.4	\$122,676	\$47,681	\$64,965	11.9%
2004-05	1.1	\$88,988	\$42,068	\$56,720	11.0%
2003-04	1.1	\$84,079	\$38,321	\$55,212	11.1%
2002-03	1.0	\$68,115	\$29,871	\$47,315	9.3%
2001-02	0.9	\$69,938	\$20,411	\$33,695	10.5%

SPACE UTILIZATION RATIOS					
Academic Year	Federal Research Exp per Research NASF	Research NASF per FT EEO Faculty	%Class Start Times not Prime Time (9-3)	% Class Hours on Friday	
2010-11	\$58	1,007	31.0%	12.3%	
2009-10	\$51	988	30.1%	11.8%	
2008-09	\$42	984	36.1%	10.9%	
2007-08	\$45	993	33.4%	9.5%	
2006-07	\$47	1,084	34.4%	8.7%	
2005-06	\$44	1,086	34.2%	11.3%	
2004-05	\$43	970	33.3%	9.8%	
2003-04	\$41	931	31.2%	10.5%	
2002-03	\$33	909	28.9%	13.3%	
2001-02	\$21	953	28.7%	12.6%	

DOE ANALYSIS: Distributes Unrestricted Expenditure to Instruction and Research based on overall DOE percentages		
Academic Year	Expenditure per SCH	Expenditure per Award Dollar
2010-11	\$529	\$1.54
2009-10	\$525	\$1.41
2008-09	\$527	\$2.01
2007-08	\$507	\$1.55
2006-07	\$452	\$1.42
2005-06	\$481	\$1.36
2004-05	\$388	\$1.66
2003-04	\$365	\$1.67
2002-03	\$298	\$2.25
2001-02	\$268	\$2.01

College Profile Report: College of Agriculture, 2010-2011

Note: Most increases or decreases in 2003-04 are due to the merger of the School of Human Environmental Sciences with the College of Agriculture; caution should be exercised in interpreting trends.

DIVERSITY SCORECARD									
Academic Year	Students as % of total			Faculty as % of total			Administrative/Executive/Managerial as % of total		
	Black, nonHispanic	Other Minorities	International Student	Female	Black, nonHispanic	Other Minorities	Female	Black, nonHispanic	Other Minorities
Undergraduates									
2010-11	9.0%	2.8%	1.1%	26.6%	2.7%	5.5%	32.4%	5.4%	0.0%
2009-10	9.6%	2.6%	0.9%	26.8%	3.4%	5.7%	36.1%	2.8%	0.0%
2008-09	9.1%	2.7%	0.8%	27.4%	3.0%	5.3%	28.1%	9.4%	0.0%
2007-08	6.8%	2.3%	0.4%	24.3%	2.7%	7.2%	34.5%	10.3%	0.0%
2006-07	6.2%	1.8%	0.8%	23.4%	2.7%	7.3%	31.0%	10.3%	0.0%
2005-06	5.7%	1.9%	0.6%	21.4%	3.1%	6.2%	25.9%	7.4%	0.0%
2004-05	5.9%	2.2%	0.5%	20.8%	3.8%	4.2%	16.7%	0.0%	0.0%
2003-04	5.7%	2.0%	0.4%	21.5%	3.3%	4.0%	30.0%	3.3%	0.0%
2002-03	3.0%	2.3%	0.5%	15.3%	1.6%	2.4%	30.0%	3.3%	0.0%
2001-02	3.7%	1.8%	1.1%	15.4%	1.2%	2.4%	30.0%	3.3%	0.0%
Graduate Students									
2010-11	4.0%	3.0%	24.9%						
2009-10	4.6%	4.3%	24.1%						
2008-09	3.6%	3.4%	26.0%						
2007-08	3.3%	3.6%	27.4%						
2006-07	4.5%	1.6%	26.8%						
2005-06	4.7%	1.8%	26.8%						
2004-05	4.5%	1.0%	27.1%						
2003-04	5.4%	0.2%	26.2%						
2002-03	3.5%	0.6%	32.2%						
2001-02	2.6%	1.0%	29.6%						
Doctor's Degree Professional Practice									
2010-11	N/A	N/A	N/A						
2009-10	N/A	N/A	N/A						
2008-09	N/A	N/A	N/A						
2007-08	N/A	N/A	N/A						
2006-07	N/A	N/A	N/A						
2005-06	N/A	N/A	N/A						
2004-05	N/A	N/A	N/A						
2003-04	N/A	N/A	N/A						
2002-03	N/A	N/A	N/A						
2001-02	N/A	N/A	N/A						
Postdoctoral Fellow									
2010-11	0.0%	8.3%	66.7%						
2009-10	0.0%	9.5%	61.9%						
2008-09	4.8%	12.9%	48.4%						
2007-08	0.0%	11.5%	48.1%						
2006-07	0.0%	5.5%	56.2%						
2005-06	0.0%	2.9%	61.8%						
2004-05	0.0%	1.4%	63.9%						
2003-04	0.0%	3.7%	57.4%						
2002-03	0.0%	2.5%	80.0%						
2001-02	0.0%	3.1%	87.5%						

College Profile Report: College of Agriculture, 2010-2011

Note: Most increases or decreases in 2003-04 are due to the merger of the School of Human Environmental Sciences with the College of Agriculture; caution should be exercised in interpreting trends.

FIVE-YEAR TRENDS

DATA Element	5-Year Increase	Percent of Provost Totals		DATA Element	5-Year Increase	Percent of Provost Totals	
		05-06	10-11			05-06	10-11
Unrestricted Expenditure	14.7%	N/A	N/A	Proposals Submitted	17.3%	N/A	N/A
Full-Time EEO Faculty	-0.4%	N/A	N/A	Sponsored Project Awards	2.5%	N/A	N/A
Average Faculty Salary	12.1%	N/A	N/A	Federal Research Exp.	22.8%	N/A	N/A
Total Majors	16.9%	N/A	N/A	Black, nonHispanic Faculty	-1	N/A	N/A
SCH Generated	-1.1%	N/A	N/A	Women Faculty	23.6%	N/A	N/A
Degrees Awarded	19.6%	N/A	N/A	Black, nonHispanic Students	73.5%	N/A	N/A

RESOURCES

ACTUAL EXPENDITURE

Academic Year	Unrestricted Total	Unrestricted by PCS Code			Restricted Funds	Auxiliary Service	Affiliated Corporation	Total
		Instruction	Research	Service				
2010-11	\$110,232,477	\$12,580,431	\$34,442,568	\$60,928,512	\$6,565,248	\$2,639,678	\$737,871	\$120,175,274
2009-10	\$106,839,746	\$11,331,382	\$34,138,903	\$59,589,518	\$6,745,764	\$2,583,788	\$842,561	\$117,011,859
2008-09	\$105,893,219	\$11,243,538	\$34,192,695	\$58,408,182	\$6,446,247	\$2,317,609	\$687,047	\$115,344,123
2007-08	\$106,600,789	\$11,199,737	\$34,439,437	\$59,119,970	\$5,723,642	\$1,700,842	\$2,698,745	\$116,724,018
2006-07	\$99,286,812	\$10,587,670	\$32,191,361	\$54,924,304	\$4,685,726	\$1,973,098	\$470,898	\$106,416,535
2005-06	\$96,067,271	\$9,745,120	\$31,038,158	\$54,064,970	\$4,673,493	\$1,854,071	\$5,688,997	\$108,283,832
2004-05	\$89,466,048	\$9,069,843	\$29,763,481	\$49,647,637	\$8,794,762	\$1,856,333	\$573,747	\$100,690,890
2003-04	\$88,569,584	\$8,911,702	\$28,069,775	\$50,792,065	\$5,791,516	\$1,806,187	\$737,433	\$96,904,720
2002-03	\$84,541,423	\$5,288,038	\$28,294,681	\$50,299,095	\$5,554,716	\$1,638,327	\$571,323	\$92,305,789
2001-02	\$77,198,045	\$4,854,412	\$25,917,036	\$45,773,228	\$4,498,074	\$1,702,055	\$4,018,948	\$87,417,122

FACULTY

Academic Year	FT Inst. Faculty	FT EEO Faculty	Ave FT Inst.* Fac. Salary	Extension Faculty
2009-10	187	265	\$76,303	70
2008-09	186	266	\$76,124	71
2007-08	186	263	\$75,141	70
2006-07	184	261	\$71,360	69
2005-06	183	257	\$69,004	69
2004-05	178	264	\$66,859	80
2003-04	183	274	\$65,440	86
2002-03	151	248	\$63,795	91
2001-02**	154	246	\$64,282	88

UNRESTRICTED TOTAL

Academic Year	UNRESTRICTED TOTAL			Total
	8A Instruction	81 Research	82 Extension	
2010-11	\$12,580,431	\$34,434,574	\$63,209,479	\$110,224,484
2009-10	\$11,331,382	\$34,138,903	\$61,369,461	\$106,839,746
2008-09	\$11,243,538	\$34,192,695	\$60,456,986	\$105,893,219
2007-08	\$11,199,737	\$34,439,437	\$60,961,614	\$106,600,788
2006-07	\$10,587,670	\$32,191,361	\$56,507,780	\$99,286,811
2005-06	\$10,964,143	\$31,038,158	\$54,064,970	\$96,067,271
2004-05	\$10,054,930	\$29,763,481	\$49,647,637	\$89,466,048
2003-04	\$9,729,607	\$36,199,484	\$42,640,493	\$88,569,584
2002-03	\$5,965,388	\$36,471,162	\$42,104,873	\$84,541,423
2001-02	\$5,512,588	\$33,835,709	\$37,849,749	\$77,198,045

* 9-month converted salary as computed for IPEDS instructional faculty salary.

** FT Inst. Faculty - Beginning in fall 2001, extension faculties were excluded and lecturers were included in the instructional faculty cohort.

DISTRIBUTION OF EFFORT

Academic Year	Number	DISTRIBUTION OF EFFORT				Admin/ Prof Dev
		Instruction	Research	Service	Admin/ Prof Dev	
2010-11	256	22.5	45.1	27.6	4.8	
2009-10	265	22.3	45.3	27.7	4.7	
2008-09	266	23.1	45.1	27.7	4.1	
2007-08	263	22.4	45.0	28.4	4.2	
2006-07	261	22.1	45.1	27.8	4.9	
2005-06	257	23.7	44.5	28.5	3.4	
2004-05	264	21.0	43.7	31.7	3.6	
2003-04	274	19.4	43.4	33.7	3.6	
2002-03	248	15.3	45.0	37.8	1.9	
2001-02	244	15.3	44.7	37.8	2.3	

DOE UNRESTRICTED EXPENDITURE DISTRIBUTION

Academic Year	DOE UNRESTRICTED EXPENDITURE DISTRIBUTION	
	Instruction	Research
2010-11	\$24,791,284	\$49,747,917
2009-10	\$23,843,212	\$48,380,669
2008-09	\$24,461,228	\$47,795,858
2007-08	\$23,878,577	\$47,970,355
2006-07	\$21,942,386	\$44,778,352
2005-06	\$22,767,943	\$42,749,936
2004-05	\$18,787,870	\$39,096,663
2003-04	\$17,182,499	\$38,439,199
2002-03	\$12,934,838	\$38,043,640
2001-02	\$11,811,301	\$34,507,526

College Profile Report: College of Agriculture, 2010-2011

Note: Most increases or decreases in 2003-04 are due to the merger of the School of Human Environmental Sciences with the College of Agriculture; caution should be exercised in interpreting trends.

FROM FALL 2001 (10TH ROW) to FALL 2010 SPACE INVENTORY (NET ASSIGNABLE SQUARE FEET- NASF)										
Class Rooms	Labs									Total
	Class	Research	Office	Study	Special	General	Support	Health	Residence	
6,920	21,557	257,777	915,051	7,898	844,010	121,674	138,429	15,592	172,886	2,501,794
5,517	13,081	261,862	857,310	7,565	660,358	90,212	283,291	15,316	181,717	2,376,229
5,517	13,081	261,862	176,920	7,565	660,358	90,212	283,291	15,316	181,717	1,695,839
4,650	18,609	261,140	195,588	12,878	660,523	90,988	287,173	15,316	182,640	1,729,505
3,840	16,002	283,047	185,385	13,046	563,588	90,025	332,840	2,567	178,627	1,668,967
3,840	25,350	279,035	187,001	13,046	562,268	93,755	261,983	2,567	169,227	1,598,072
3,450	16,699	256,134	166,335	11,507	586,965	96,582	253,148	1,800	172,521	1,565,141
3,381	20,249	255,168	167,716	13,758	588,508	96,386	249,769	2,364	171,871	1,569,170
3,381	16,621	225,401	142,185	11,955	576,633	90,472	242,464	1,800	159,577	1,470,489
3,381	14,140	234,369	144,668	3,634	588,102	82,295	249,853	1,800	160,927	1,483,169

* Excludes Free Space

REVENUE SOURCES				
Academic Year	Tuition	Endowment Market Value	Private Giving	Tuition as % Unrestr. Exp.
2010-11	\$17,102,140	\$84,729,489	\$4,852,546	N/A
2009-10	\$15,526,415	\$73,578,548	\$6,424,774	N/A
2008-09	\$14,743,594	\$68,233,472	\$5,958,057	N/A
2007-08	\$13,995,970	\$89,731,117	\$4,207,395	N/A
2006-07	\$13,285,847	\$96,733,643	\$5,085,954	N/A
2005-06	\$11,551,385	\$81,885,152	\$11,245,447	N/A
2004-05	\$10,568,700	\$67,626,069	\$5,388,438	N/A
2003-04	\$8,865,591	\$61,357,904	\$5,020,002	N/A
2002-03	\$3,671,153	\$50,680,214	\$4,125,480	N/A
2001-02	\$3,730,882	\$51,041,907	\$8,765,464	N/A

The 2007-08 PRIVATE GIVING total may vary from year to year as adjustments are made.

College Profile Report: College of Agriculture, 2010-2011

Note: Most increases or decreases in 2003-04 are due to the merger of the School of Human Environmental Sciences with the College of Agriculture; caution should be exercised in interpreting trends.

INSTRUCTIONAL OUTCOMES

ATTEMPTED STUDENT CREDIT HOURS						DEGREES AWARDED				
Academic Year	100-499(G)	500-599	600-799	800-999	Total	B	M/S	D_Research	D_Prof	Total
2010-11	38,256	3,645	3,335	1,591	46,827	537	59	27	0	623
2009-10	36,945	3,495	3,323	1,637	45,400	484	56	29	0	569
2008-09	37,924	3,397	3,454	1,661	46,436	513	73	24	0	610
2007-08	37,465	4,195	3,532	1,931	47,123	547	58	19	0	624
2006-07	38,730	4,276	3,652	1,901	48,559	489	77	33	0	599
2005-06	37,260	4,551	3,650	1,884	47,345	442	57	22	0	521
2004-05	38,148	4,723	3,841	1,728	48,440	394	84	30	0	508
2003-04	37,084	4,453	3,888	1,671	47,096	418	69	33	0	520
2002-03	34,450	4,114	3,454	1,388	43,406	213	60	16	0	289
2001-02	34,088	4,622	3,815	1,624	44,149	274	50	20	0	344

*Academic year: Fall, Spring, Summer

*Courses historically offered in other colleges are mapped to the current college.

OVERALL RETENTION		
Academic Year	1st to 2nd Year Retention in: University ¹	College ²
2010-11	79.5	64.7
2009-10	82.2	72.8
2008-09	81.8	74.8
2007-08	73.6	66.7
2006-07	76.4	65.0
2005-06	83.1	74.3
2004-05	78.6	69.3
2003-04	74.4	66.3
2002-03	82.0	68.9
2001-02	75.3	58.6

MAJORS					
Fall Semester	B	M/S	D_Research	D_Prof	Total
2010-11	2,372	211	187	0	2,770
2009-10	2,185	206	188	0	2,579
2008-09	2,130	207	178	0	2,515
2007-08	2,096	219	175	0	2,490
2006-07	2,129	219	161	0	2,509
2005-06	1,985	217	167	0	2,369
2004-05	1,801	251	169	0	2,221
2003-04	1,913	256	168	0	2,337
2002-03	1,155	184	155	0	1,494
2001-02	1,141	162	145	0	1,448

¹ Percentage of cohort entering college that returned to University

² Percentage of cohort entering college that returned to college

GRADUATING SENIOR SURVEYS								
Academic Years	Quality of instruction by Faculty in Major		My advisor is someone I would recommend to other students		Required courses were offered so that I could complete my degree on time		I would recommend my major program to other students	
	Responses	Average ¹	Responses	Average ²	Responses	Average ²	Responses	Average ²
2008-11	1,075	3.4	1,077	3.8	1,078	3.8	1,078	4.2
2007-10	1,147	3.4	1,144	3.9	1,146	3.8	1,145	4.3
2006-09	897	3.4	895	3.9	897	3.7	896	4.3
2005-08	1,031	3.4	1,028	4.0	1,029	3.7	1,028	4.3
2004-07	1,001	3.5	998	4.0	999	3.7	999	4.2
2003-06	951	3.4	948	4.0	948	3.7	947	4.2
2000-03	678	3.5	676	3.4	678	3.1	676	3.5
1999-02	653	3.6	652	3.4	653	3.1	653	3.5
1998-01	516	3.6	513	3.4	513	3.2	513	3.6
1997-00	388	3.7	384	3.4	387	3.2	387	3.6

¹ Scale: Four-point Scale: Poor=1 Fair=2 Good=3 Excellent=4.

² Scale: Increases in 2004 are due to a change in the scale. In previous years a four-point scale was used.

For 2004 data, a five-point scale was used: Strongly disagree=1 Disagree=2 Not sure=3 Agree=4 Strongly agree=5.

College Profile Report: College of Agriculture, 2010-2011

Note: Most increases or decreases in 2003-04 are due to the merger of the School of Human Environmental Sciences with the College of Agriculture; caution should be exercised in interpreting trends.

SPONSORED PROJECTS AND EXPENDITURES

SPONSORED PROJECTS		
Academic Year	Proposals Submitted	Awards Total
2010-11	407	\$32,312,992
2009-10	386	\$34,221,048
2008-09	373	\$23,829,306
2007-08	337	\$30,972,002
2006-07	340	\$31,488,174
2005-06	347	\$31,527,814
2004-05	296	\$23,492,755
2003-04	315	\$23,037,707
2002-03	240	\$16,892,430
2001-02	212	\$17,204,795

RESEARCH				
Academic Year	Federal Res. Expenditure	Total Research Expenditure		
		Indirect	Direct	All
2010-11	\$15,047,000	\$2,529,000	\$17,346,000	\$19,876,000
2009-10	\$13,382,000	\$2,666,000	\$16,450,000	\$19,116,000
2008-09	\$11,003,000	\$2,250,000	\$15,857,000	\$18,106,000
2007-08	\$11,830,000	\$2,120,000	\$14,081,000	\$16,200,000
2006-07	\$13,219,000	\$2,003,000	\$16,196,000	\$18,199,000
2005-06	\$12,254,000	\$1,987,000	\$14,710,000	\$16,696,000
2004-05	\$11,106,000	\$1,645,000	\$13,329,000	\$14,974,000
2003-04	\$10,500,000	\$1,682,000	\$13,446,000	\$15,128,000
2002-03	\$7,408,000	\$1,087,000	\$10,647,000	\$11,734,000
2001-02	\$5,021,000	\$874,000	\$7,415,000	\$8,289,000

INSTRUCTION				
Academic Year	Federal Ins. Expenditure	Total Instruction Expenditure		
		Indirect	Direct	All
2010-11	\$74,000	\$7,000	\$70,000	\$77,000
2009-10	\$213,000	\$31,000	\$183,000	\$214,000
2008-09	\$261,000	\$39,000	\$229,000	\$267,000
2007-08	\$646,000	\$82,000	\$650,000	\$732,000
2006-07	\$386,000	\$45,000	\$354,000	\$399,000
2005-06	\$405,000	\$47,000	\$391,000	\$438,000
2004-05	\$208,000	\$6,000	\$238,000	\$244,000
2003-04	\$367,000	\$28,000	\$377,000	\$405,000
2002-03	\$122,000	\$2,000	\$135,000	\$137,000
2001-02	\$125,000	\$6,000	\$164,000	\$170,000

PUBLIC SERVICE				
Academic Year	Federal Pub. Expenditure	Total Public Service Expenditure		
		Indirect	Direct	All
2010-11	\$7,767,000	\$671,000	\$8,928,000	\$9,599,000
2009-10	\$7,204,000	\$679,000	\$9,053,000	\$9,732,000
2008-09	\$6,194,000	\$604,000	\$7,635,000	\$8,239,000
2007-08	\$5,434,000	\$343,000	\$6,769,000	\$7,111,000
2006-07	\$5,273,000	\$260,000	\$6,683,000	\$6,943,000
2005-06	\$4,217,000	\$239,000	\$5,626,000	\$5,866,000
2004-05	\$3,128,000	\$167,000	\$4,403,000	\$4,570,000
2003-04	\$1,993,000	\$108,000	\$2,861,000	\$2,969,000
2002-03	\$1,865,000	\$177,000	\$2,277,000	\$2,453,000
2001-02	\$1,218,000	\$147,000	\$1,643,000	\$1,791,000

TOTAL EXPENDITURE				
Academic Year	Federal Expenditure	Total Expenditure		
		Indirect	Direct	All
2010-11	\$22,889,000	\$3,208,000	\$26,344,000	\$29,552,000
2009-10	\$20,798,000	\$3,375,000	\$25,685,000	\$29,060,000
2008-09	\$17,458,000	\$2,892,000	\$23,718,000	\$26,610,000
2007-08	\$17,926,000	\$2,547,000	\$21,573,000	\$24,120,000
2006-07	\$18,895,000	\$2,310,000	\$23,301,000	\$25,611,000
2005-06	\$16,876,000	\$2,273,000	\$20,727,000	\$23,000,000
2004-05	\$14,442,000	\$1,819,000	\$17,970,000	\$19,789,000
2003-04	\$12,917,000	\$1,818,000	\$16,741,000	\$18,559,000
2002-03	\$9,395,000	\$1,265,000	\$13,060,000	\$14,325,000
2001-02	\$6,364,000	\$1,027,000	\$9,223,000	\$10,250,000

College Profile Report: College of Agriculture, 2010-2011

Note: Most increases or decreases in 2003-04 are due to the merger of the School of Human Environmental Sciences with the College of Agriculture; caution should be exercised in interpreting trends.

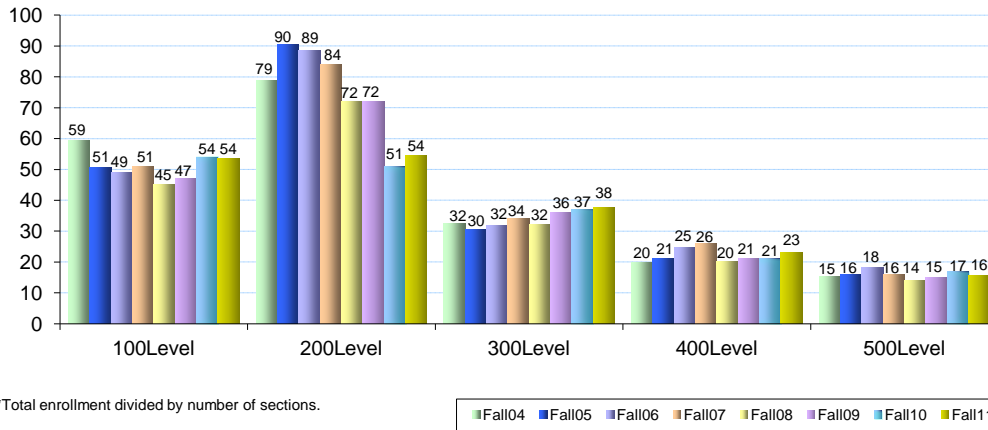
DIVERSITY OUTCOMES

Fall Semester	White	Black, nonHispanic	Asian Pacific	Hispanic	American Indian	Not Reported	Nonresident Alien	Two or More Races	Total	Total Female
Administrative/Executive/Managerial										
2010-11	35	2	0	0	0	0	0	0	37	12
2009-10	35	1	0	0	0	0	0	0	36	13
2008-09	29	3	0	0	0	0	0	0	32	9
2007-08	26	3	0	0	0	0	0	0	29	10
2006-07	26	3	0	0	0	0	0	0	29	9
2005-06	25	2	0	0	0	0	0	0	27	7
2004-05	18	0	0	0	0	0	0	0	18	3
2003-04	29	1	0	0	0	0	0	0	30	9
2002-03	29	1	0	0	0	0	0	0	30	9
2001-02	29	1	0	0	0	0	0	0	30	9
FT EEO Faculty										
2010-11	231	7	14	0	0	0	4	0	256	68
2009-10	234	9	15	0	0	0	7	0	265	71
2008-09	236	8	14	0	0	0	8	0	266	73
2007-08	237	7	19	0	0	0	0	0	263	64
2006-07	235	7	18	1	0	0	0	0	261	61
2005-06	233	8	15	1	0	0	0	0	257	55
2004-05	243	10	11	0	0	0	0	0	264	55
2003-04	254	9	10	1	0	0	0	0	274	59
2002-03	238	4	5	1	0	0	0	0	248	38
2001-02	237	3	5	1	0	0	0	0	246	38
Undergraduates										
2010-11	1,997	213	28	36	2	61	25	10	2,372	1,425
2009-10	1,861	209	27	25	5	39	19	N/A	2,185	1,329
2008-09	1,825	193	37	17	4	37	17	N/A	2,130	1,292
2007-08	1,850	143	33	10	5	46	9	N/A	2,096	1,267
2006-07	1,907	131	28	7	3	37	16	N/A	2,129	1,251
2005-06	1,788	114	25	11	2	33	12	N/A	1,985	1,135
2004-05	1,617	107	22	13	4	29	9	N/A	1,801	1,047
2003-04	1,734	109	20	12	6	25	7	N/A	1,913	1,149
2002-03	1,077	35	16	9	2	10	6	N/A	1,155	517
2001-02	1,061	42	13	5	3	5	12	N/A	1,141	527
Graduate Students										
2010-11	252	16	6	5	1	17	99	2	398	228
2009-10	249	18	8	8	1	15	95	N/A	394	229
2008-09	244	14	6	6	1	14	100	N/A	385	224
2007-08	240	13	6	7	1	19	108	N/A	394	216
2006-07	238	17	3	3	0	17	102	N/A	380	211
2005-06	237	18	4	3	0	19	103	N/A	384	216
2004-05	262	19	2	2	0	21	114	N/A	420	243
2003-04	264	23	0	0	1	25	111	N/A	424	240
2002-03	203	12	0	2	0	13	109	N/A	339	154
2001-02	190	8	1	1	1	15	91	N/A	307	136
Doctor's Degree Professional Practice										
2010-11	0	0	0	0	0	0	0	0	0	0
2009-10	0	0	0	0	0	0	0	N/A	0	0
2008-09	0	0	0	0	0	0	0	N/A	0	0
2007-08	0	0	0	0	0	0	0	N/A	0	0
2006-07	0	0	0	0	0	0	0	N/A	0	0
2005-06	0	0	0	0	0	0	0	N/A	0	0
2004-05	0	0	0	0	0	0	0	N/A	0	0
2003-04	0	0	0	0	0	0	0	N/A	0	0
2002-03	0	0	0	0	0	0	0	N/A	0	0
2001-02	0	0	0	0	0	0	0	N/A	0	0
Postdoctoral Fellow										
2010-11	13	0	5	1	0	5	48	0	72	30
2009-10	13	0	6	0	0	5	39	N/A	63	23
2008-09	14	3	7	1	0	7	30	N/A	62	29
2007-08	3	0	5	1	0	18	25	N/A	52	22
2006-07	5	0	3	1	0	23	41	N/A	73	22
2005-06	9	0	2	0	0	15	42	N/A	68	25
2004-05	9	0	1	0	0	16	46	N/A	72	23
2003-04	5	0	2	0	0	16	31	N/A	54	18
2002-03	5	0	1	0	0	2	32	N/A	40	14
2001-02	3	0	1	0	0	0	28	N/A	32	10

COLLEGE OF AGRICULTURE SUMMARY

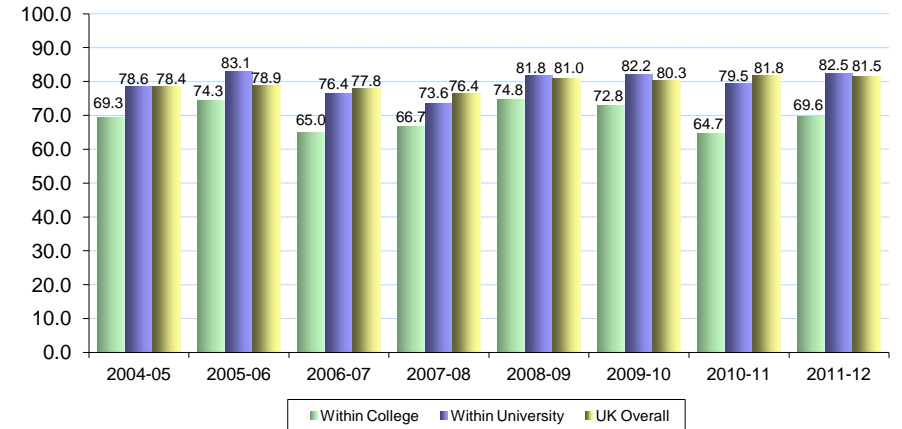
Fall Semester	MAJORS					ANNUAL DEGREES AWARDED					FACULTY			RATIOS
	B	M/S	D_Res	D_Prof	Total	B	M/S	D_Res	D_Prof	Total	Full Time Faculty	African American	Departed Faculty	FTE S:F
2011-12	2,446	218	198	0	2,862	Not Yet Available					254	6		14.9
2010-11	2,372	211	187	0	2,770	537	59	27	0	623	256	7		14.1
2009-10	2,185	206	188	0	2,579	484	56	29	0	569	265	9		12.5
2008-09	2,130	207	178	0	2,515	513	73	24	0	610	266	8	Not	12.3
2007-08	2,096	219	175	0	2,490	547	58	19	0	624	263	7	Yet	11.9
2006-07	2,129	219	161	0	2,509	489	77	33	0	599	261	7	Available	11.9
2005-06	1,985	217	167	0	2,369	442	57	22	0	521	257	8		11.3
2004-05	1,801	251	169	0	2,221	394	84	30	0	508	264	10		10.9
2003-04	1,913	256	168	0	2,337	418	69	33	0	520	274	9		10.7

**Undergraduate Student Experience:
Total College Average Class Size* by Level**

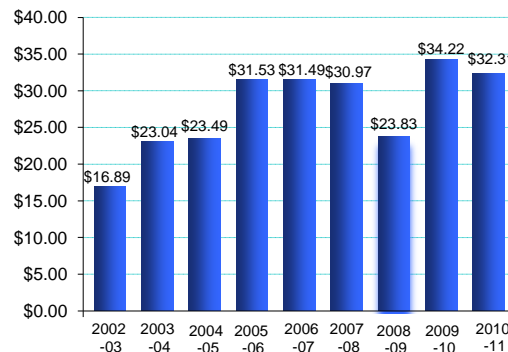


*Total enrollment divided by number of sections.

Undergraduate 1st to 2nd Year Retention



Awards (in millions)



SPONSORED PROJECTS		
Academic Year	Proposals Submitted	Awards Total
2010-11	407	\$32.31
2009-10	386	\$34.22
2008-09	373	\$23.83
2007-08	337	\$30.97
2006-07	340	\$31.49
2005-06	347	\$31.53
2004-05	296	\$23.49
2003-04	315	\$23.04
2002-03	240	\$16.89

Academic Year	GENERAL FUND BUDGET				PRIVATE GIVING	
	Total Amount	% Increase	State / Tuition Base	% Increase	Number Donors	Annual Giving
2011-12	\$108,453,435	1.1%	\$82,295,735	0.8%		
2010-11	\$107,255,961	3.0%	\$81,677,134	1.5%	3,967	\$4,852,546
2009-10	\$104,168,301	0.0%	\$80,478,451	-0.3%	3,872	\$6,424,774
2008-09	\$104,135,759	0.3%	\$80,720,759	-1.7%	3,869	\$5,958,057
2007-08	\$103,846,900	5.0%	\$82,153,671	4.2%	4,215	\$4,207,395
2006-07	\$98,879,500	4.7%	\$78,843,538	4.6%	4,506	\$5,085,954
2005-06	\$94,399,800	5.3%	\$75,360,599	6.0%	3,596	\$11,245,447
2004-05	\$89,654,200	2.6%	\$71,065,977	0.8%		\$5,388,438
2003-04	\$87,353,200		\$70,535,891			\$5,020,002



UNIVERSITY OF
KENTUCKY®

Office of Institutional Effectiveness

[Home](#)

[Home](#) : [Planning and Accreditation](#) : [Program Review](#)

[Organizational Chart](#)



[Assessment](#)

[Institutional Research](#)

[Planning and Program Review](#)

[Accreditation](#)

[Bb Outcomes Resources](#)

[External Consultant](#)

[Resources](#)



[UK](#) [IRPE](#)

Planning and Accreditation

[Strategic Planning](#) | [Annual Progress Reports](#) | [Program Review](#) | [CAO](#) | [Accreditation](#)

Periodic Program Review

The Periodic Program Review is the primary vehicle for review of educational and administrative units and for documentation of institutional effectiveness. University of Kentucky's [Governing Regulation IX](#) requires that each educational and administrative unit in the University shall be reviewed comprehensively at regular intervals by an ad hoc committee. The review period shall normally be from five (5) to seven (7) years. This review period enables educational and administrative units to better align their goals and plans with those of the college and University. This process is designed to improve the quality and effectiveness of teaching and learning, research, public service, and operations. It does so by systematically examining missions, goals, objectives, resources, activities, processes, and outcomes of programs and services ([Administrative Regulations 1:4](#)).

Program Review Schedule

The following links provide 5–7 year review schedules of the University's educational and administrative units. The schedules are updated annually. Inquiries should be directed to [Connie Vaughn](#).

- [All Educational and Administrative Units](#)

Program Review Calendar: The Periodic Program Review Calendar is a guidepost for assisting educational and administrative units with monitoring progress and completion dates. Administrative units can expect to complete their periodic program review in one calendar year. Educational units can expect to complete their periodic review in one academic year. Listed below is the calendar for educational and administrative units:

[2012 – 2013 Educational Unit Calendar](#)

[2012 – 2013 Administrative Unit Calendar](#)

[2011 – 2012 Educational Unit Calendar](#)

[2011 – 2012 Administrative Unit Calendar](#)

Institutional Data to Support Program Review

- [ACT and HSGPA information/First-time Freshmen ACT Scores](#) (by college and program).
- [Headcount Enrollment Information](#) (by college, program, and degree level).
- [Student credit hours \(Schs\)](#) (by college, department, and overall)
- [Degrees Awarded Information](#) (by college, program, and degree level).
- [Retention and Graduation Rate Reports](#)
- [AAUP Teaching Faculty](#) (by college, department, rank, and gender with average salaries)
- [Faculty productivity](#) (by college, department, and overall).
- [Course History Information](#)
- [Undergraduate/Graduate Alumni Survey results](#) (by college, department, and overall).
- [Graduating Senior Survey Results](#) (by college and overall)

- [College Profile Reports](#) (follow the link to the college of interest)
- [UK Graduate School's Annual Statistical Report](#) (Doctoral Placement Survey results, Graduate Student Productivity Report, and the GRE Report.)

Program Review Components

UK's Periodic Program Review process entails the following 4 components:

Unit Self-Study Report: The self-study report is a comprehensive internal review of the total unit area. It contains the unit vision, mission, goals, and recommendations based on an analysis of the unit information.

External Review: The external review provides an external perspective regarding the quality and effectiveness of the unit's programs, services, resources, processes, and operations. Its purpose is to assure an objective, unbiased assessment of the unit.

Implementation Plan: The Implementation Plan sets the agenda for change and quality enhancement over the next 5-7 year cycle. It is the synthesis and integration of the results and recommendations from the Unit Self-Study report and External Review

Annual Progress Reports: The Annual Progress Report strengthens the link between program review and subsequent planning, budgeting, and assessment activities.

Periodic Program Review Additional Resources

- [Program Review Workshop Presentation for administrative units](#)
- [Program Review Workshop Presentations for academic programs](#)
- [Governing Regulations & Administrative Regulations](#)
- [Program Review FAQs](#)



[Site Index and Definitions](#)

E-mail us if you have questions or concerns regarding web site information.

Last modified: October 17, 2012 5:37 PM | An [Equal Opportunity University](#)

see blue.
in everything we do



UNIVERSITY OF
KENTUCKY

Office of Institutional Effectiveness

[Home](#)

[Home](#) : Institutional Research

[Organizational Chart](#)



[Assessment
Institutional Research
Planning and Program Review](#)

[Accreditation](#)

[Blackboard Outcomes](#)

[External Consultant
Resources](#)



[UK](#) [IRPE](#)

Office of Institutional Research

[Dr. Roger Sugarman](#), Director

Institutional Research plays an active role in carrying out research to identify campus needs and priorities. It is also responsible for preparing and analyzing data for official reports to the University, state, federal and other external agencies.

The Office of Institutional Research plays an active role in:

- Compiling and disseminating historical data on [enrollments](#), [degrees conferred](#), and [retention and graduation rates](#)
- Conducting ad hoc studies on significant policy issues
- Maintaining a compendium of statistics on [faculty](#) and [staff](#)
- Managing and reporting on the [Teacher/Course Evaluation](#) process
- Conducting and analyzing [student and alumni surveys](#)
- Carrying out research to identify campus needs and clarify institutional priorities

[Reports prepared by the Office of Institutional Research](#)

[Office of Institutional Research Policies](#)

Office of Institutional Research Staff

[Dr. Roger Sugarman](#), Director
[Barry Rankin](#), Assistant Director External Reporting
[Dr. Onecia Gibson](#), Assistant Director Research and Analysis
[Carol Yu](#), Survey Coordinator and Data Analyst
[Dr. Helena Truszczynska](#), Statistician
[Lu Wang](#), Data Analyst
[Amy Messer](#), Administrative Research Assistant Principal

[Site Index and Definitions](#)

E-mail us if you have questions or concerns regarding web site information.

Last modified: October 17, 2012 5:36 PM | An [Equal Opportunity University](#)

see blue.
in everything we do.

PRODUCTIVITY ANALYSIS

INSTRUCTIONAL RATIOS

Academic Year	Inst. Exp per SCH	Total Exp per SCH	SCH Generated per FT Instructional Faculty	Majors per FT EEO Faculty	Degrees per FT EEO Faculty
2009-10	\$270	\$355	559	17.3	4.0
2008-09	\$266	\$349	575	17.5	4.4
2007-08	\$270	\$352	561	17.3	4.5
2006-07	\$245	\$319	589	18.3	4.4
2005-06	\$240	\$309	588	18.1	4.4
2004-05	\$227	\$289	589	18.0	4.3
2003-04	\$219	\$278	570	18.1	4.3
2002-03	\$219	\$278	564	17.6	4.1
2001-02	\$212	\$272	561	17.2	4.2
2000-01	\$210	\$270	564	16.5	4.1

* Unrestricted

SPONSORED PROJECT / RESEARCH RATIOS

Academic Year	Proposals per FT EEO Faculty	Awards per FT EEO Faculty	Federal Exp. per FT EEO Faculty	Total Exp. per FT EEO Faculty	Indirect Cost as % of Total Research Expenditures
2009-10	0.8	\$83,684	\$46,775	\$54,254	20.8%
2008-09	0.8	\$67,564	\$44,705	\$53,472	20.6%
2007-08	0.8	\$68,137	\$49,086	\$59,480	19.9%
2006-07	0.8	\$81,645	\$51,112	\$63,330	18.7%
2005-06	0.9	\$84,724	\$51,159	\$64,259	19.4%
2004-05	1.0	\$82,099	\$48,967	\$61,263	19.4%
2003-04	0.9	\$72,964	\$46,786	\$59,914	18.9%
2002-03	0.9	\$73,444	\$40,894	\$48,768	20.8%
2001-02	0.8	\$64,160	\$35,109	\$44,759	20.8%
2000-01	0.7	\$56,796	\$29,877	\$38,629	21.2%

SPACE UTILIZATION RATIOS

Academic Year	Federal Research Exp per Research NASF	Research NASF per FT EEO Faculty	%Class Start Times not Prime Time (9-3)	% Class Hours on Friday
2009-10	\$139	337	36.2%	10.8%
2008-09	\$126	354	36.0%	11.2%
2007-08	\$135	364	35.3%	11.2%
2006-07	\$132	386	35.4%	10.8%
2005-06	\$135	380	35.6%	10.9%
2004-05	\$128	384	35.5%	11.7%
2003-04	\$125	375	35.1%	12.2%
2002-03	\$108	380	35.0%	12.1%
2001-02	\$95	370	34.5%	11.9%
2000-01	N/A	N/A	N/A	N/A

DOE ANALYSIS: Distributes Unrestricted Expenditure to Instruction and Research based on overall DOE percentages

Academic Year	Expenditure per SCH	Expenditure per Award Dollar
2009-10	\$157	\$0.73
2008-09	\$149	\$0.93
2007-08	\$152	\$0.93
2006-07	\$140	\$0.73
2005-06	\$131	\$0.70
2004-05	\$123	\$0.68
2003-04	\$119	\$0.73
2002-03	\$120	\$0.70
2001-02	\$125	\$0.75
2000-01	\$116	\$0.88

DIVERSITY SCORECARD									
Academic Year	Students as % of total			Faculty as % of total			Administrative/Executive/Managerial as % of total		
	Black, nonHispanic	Other Minorities	International Student	Female	Black, nonHispanic	Other Minorities	Female	Black, nonHispanic	Other Minorities
Undergraduates									
2009-10	6.9%	4.3%	1.4%	37.6%	5.8%	9.7%	44.7%	5.9%	7.1%
2008-09	6.4%	4.0%	1.1%	36.9%	5.4%	9.8%	48.8%	6.0%	3.6%
2007-08	5.6%	3.6%	0.9%	36.5%	5.0%	11.5%	48.3%	6.7%	3.4%
2006-07	5.6%	3.4%	1.0%	35.7%	4.7%	11.7%	41.3%	7.6%	2.2%
2005-06	5.3%	3.2%	1.0%	34.7%	4.8%	10.9%	37.7%	2.9%	2.9%
2004-05	5.9%	3.0%	1.1%	34.3%	4.9%	10.6%	34.4%	0.0%	1.6%
2003-04	5.5%	2.9%	1.3%	33.8%	4.5%	9.8%	37.9%	1.7%	1.7%
2002-03	5.5%	2.7%	1.7%	33.9%	4.5%	8.9%	32.1%	0.0%	3.8%
2001-02	5.9%	2.9%	2.1%	33.8%	4.1%	8.6%	32.1%	1.9%	3.8%
2000-01	6.2%	2.8%	2.4%	32.9%	4.3%	8.2%	30.2%	1.9%	3.8%
Graduate Students									
2009-10	5.4%	3.7%	15.3%						
2008-09	5.4%	3.9%	16.2%						
2007-08	5.3%	3.4%	17.5%						
2006-07	4.9%	3.0%	16.9%						
2005-06	5.2%	3.0%	17.0%						
2004-05	5.1%	3.0%	16.8%						
2003-04	5.4%	3.1%	16.8%						
2002-03	5.4%	2.8%	17.2%						
2001-02	5.8%	2.5%	15.4%						
2000-01	5.2%	2.3%	13.3%						
Doctor's Degree Professional Practice									
2009-10	5.5%	4.8%	1.2%						
2008-09	5.6%	3.9%	1.0%						
2007-08	5.3%	4.1%	1.4%						
2006-07	5.1%	3.6%	1.0%						
2005-06	4.3%	3.4%	0.6%						
2004-05	4.8%	3.6%	0.6%						
2003-04	4.1%	3.8%	0.6%						
2002-03	3.9%	4.0%	0.7%						
2001-02	3.4%	4.1%	0.6%						
2000-01	3.3%	3.1%	1.0%						
Postdoctoral Fellow									
2009-10	4.9%	13.7%	45.1%						
2008-09	5.8%	15.1%	53.5%						
2007-08	6.5%	19.5%	39.0%						
2006-07	2.0%	6.1%	57.1%						
2005-06	3.2%	6.5%	59.7%						
2004-05	0.0%	5.9%	58.5%						
2003-04	0.8%	7.0%	53.1%						
2002-03	1.0%	9.3%	75.3%						
2001-02	0.9%	0.9%	78.0%						
2000-01	3.4%	0.0%	72.6%						

FIVE-YEAR TRENDS

DATA Element	5-Year Increase	Percent of Provost Totals		DATA Element	5-Year Increase	Percent of Provost Totals	
		04-05	09-10			04-05	09-10
Unrestricted Expenditure	27.3%	N/A	N/A	Proposals Submitted	-5.8%	N/A	N/A
Full-Time EEO Faculty	8.9%	N/A	N/A	Sponsored Project Awards	11.0%	N/A	N/A
Average Faculty Salary	14.3%	N/A	N/A	Federal Research Exp.	4.0%	N/A	N/A
Total Majors	4.6%	N/A	N/A	Black, nonHispanic Faculty	16	N/A	N/A
SCH Generated	3.7%	N/A	N/A	Women Faculty	19.5%	N/A	N/A
Degrees Awarded	2.0%	N/A	N/A	Black, nonHispanic Students	17.4%	N/A	N/A

RESOURCES

ACTUAL EXPENDITURE

Academic Year	Unrestricted Total	Unrestricted by PCS Code			Restricted Funds	Auxiliary Service	Affiliated Corporation	Total
		Instruction	Research	Service				
2009-10	\$226,506,882	\$172,556,622	\$8,855,864	\$16,387,040	\$10,208,812	\$1,139,394	\$14,280,052	\$252,135,140
2008-09	\$218,074,066	\$165,787,421	\$10,714,236	\$14,191,300	\$10,747,730	\$896,987	\$12,507,603	\$242,226,386
2007-08	\$215,304,267	\$165,102,063	\$7,334,946	\$14,402,562	\$9,949,285	\$729,564	\$11,686,260	\$237,669,376
2006-07	\$202,047,102	\$155,138,384	\$6,722,222	\$13,347,353	\$10,460,029	\$898,509	\$11,437,112	\$224,842,752
2005-06	\$191,753,404	\$148,962,696	\$6,136,988	\$13,942,337	\$8,712,282	\$910,915	\$10,242,440	\$211,619,041
2004-05	\$177,888,709	\$140,062,081	\$5,326,552	\$12,461,187	\$8,292,112	\$611,829	\$10,055,653	\$196,848,303
2003-04	\$166,654,002	\$131,691,102	\$6,034,148	\$11,246,138	\$8,398,640	\$890,430	\$8,982,710	\$184,925,782
2002-03	\$164,821,644	\$129,923,909	\$7,057,461	\$10,974,350	\$8,686,127	\$693,151	\$9,162,887	\$183,363,808
2001-02	\$153,605,695	\$119,644,796	\$6,377,580	\$10,904,707	\$10,624,706	\$638,015	\$8,279,448	\$173,147,864
2000-01	\$149,533,877	\$116,150,240	\$6,576,654	\$11,732,387	\$6,935,849	\$547,129	\$7,676,844	\$164,693,699

FACULTY

Academic Year	FT Inst. Faculty	FT EEO Faculty	Ave FT Inst.* Fac. Salary
2009-10	1,142	1,223	\$81,189
2008-09	1,086	1,185	\$80,813
2007-08	1,091	1,176	\$79,351
2006-07	1,076	1,161	\$76,065
2005-06	1,056	1,133	\$73,685
2004-05	1,046	1,123	\$71,026
2003-04	1,054	1,109	\$69,911
2002-03	1,051	1,109	\$66,953
2001-02	1,008	1,077	\$66,713
2000-01	983	1,081	\$64,843

* University wide 9-month converted salary, excluding College of Medicine (IPEDS definiti

DISTRIBUTION OF EFFORT

DOE UNRESTRICTED EXPENDITURE DISTRIBUTION

Academic Year	Number	DISTRIBUTION OF EFFORT				Admin/Prof Dev	DOE UNRESTRICTED EXPENDITURE DISTRIBUTION	
		Instruction	Research	Service	Instruction		Research	
2009-10	1,288	44.1	33.0	12.0	10.9	\$99,998,711	\$74,771,734	
2008-09	1,185	42.7	34.1	11.9	11.3	\$93,184,357	\$74,415,376	
2007-08	1,176	43.1	34.5	10.6	11.7	\$92,796,139	\$74,279,972	
2006-07	1,157*	44.0	34.4	11.2	10.5	\$88,900,725	\$69,504,203	
2005-06	1,133	42.5	34.9	10.9	11.7	\$81,476,021	\$66,941,113	
2004-05	1,123	42.5	35.4	11.3	10.7	\$75,602,701	\$63,043,758	
2003-04	1,109	42.9	35.5	10.8	10.8	\$71,427,905	\$59,162,171	
2002-03	1,109	43.3	34.5	10.9	11.3	\$71,367,772	\$56,863,467	
2001-02	1,074	45.9	33.8	9.1	11.3	\$70,505,014	\$51,918,725	
2000-01	1,078	43.1	36.2	8.3	12.4	\$64,449,101	\$54,131,263	

*4 A&S faculty members don't have DOE information

FROM FALL 2001 (9TH ROW) to FALL 2009 SPACE INVENTORY (NET ASSIGNABLE SQUARE FEET- NASF)

Class Rooms	Labs									
	Class	Research	Office	Study	Special	General	Support	Health	Residence	Total
35,891	177,295	412,411	619,575	22,255	82,725	83,540	42,312	43,541	311	1,519,856
30,943	175,198	419,388	624,733	39,255	74,404	89,669	64,280	40,974	2,059	1,560,903
24,216	173,489	427,585	609,489	36,740	74,107	90,819	69,315	40,592	2,165	1,548,517
27,899	171,655	447,891	600,952	38,932	74,038	90,960	76,360	42,799	2,317	1,573,803
34,143	170,409	430,736	599,967	39,078	75,149	88,840	82,454	42,879	1,639	1,565,294
24,281	178,962	431,139	587,413	39,333	73,954	90,909	84,989	43,245	1,536	1,555,761
20,304	169,553	416,177	538,832	39,498	71,636	88,936	75,096	44,803	1,317	1,466,152
13,324	154,445	421,251	523,613	38,112	69,395	83,210	71,470	47,310	1,317	1,423,447
19,020	145,163	398,135	513,021	16,160	34,217	86,599	69,351	47,205	1,317	1,330,188

* Excludes Free Space

REVENUE SOURCES				
Academic Year	Tuition	Endowment Market Value	Private Giving	Tuition as % Unrestr. Exp.
2009-10	\$224,815,346	\$205,185,558	\$12,902,558	99.3%
2008-09	\$208,450,520	\$184,459,701	\$11,958,524	95.6%
2007-08	\$189,926,919	\$241,653,124	\$14,753,471	88.2%
2006-07	\$178,039,070	\$253,651,948	\$12,941,192	88.1%
2005-06	\$157,595,601	\$217,500,259	\$10,394,119	82.2%
2004-05	\$140,609,863	\$196,228,349	\$22,257,904	79.0%
2003-04	\$119,659,462	\$173,097,167	\$16,762,576	71.8%
2002-03	\$103,924,650	\$145,606,735	\$15,470,499	63.1%
2001-02	\$93,534,069	\$139,197,069	\$10,928,676	60.9%
2000-01	\$86,488,304	\$147,558,263	\$14,520,608	57.8%

The 2007-08 PRIVATE GIVING total may vary from year to year as adjustments are made.

INSTRUCTIONAL OUTCOMES

Academic Year	STUDENT CREDITS HOURS GENERATED					DEGREES AWARDED				
	100-499(G)	500-599	600-799	800-999	Total	B	M/S	D_Research	D_Prof	Total
2009-10	481,519	29,910	65,348	61,871	638,648	3,209	1,157	206	370	4,942
2008-09	472,232	30,881	63,460	57,440	624,013	3,374	1,257	206	352	5,189
2007-08	463,340	32,185	60,057	56,517	612,099	3,462	1,251	213	359	5,285
2006-07	483,710	33,382	59,939	57,002	634,033	3,348	1,295	227	275	5,145
2005-06	472,123	33,519	61,976	52,961	620,579	3,243	1,302	192	300	5,037
2004-05	468,526	33,924	63,274	50,052	615,776	3,052	1,271	221	302	4,846
2003-04	451,304	32,910	63,721	52,401	600,336	3,118	1,181	190	286	4,775
2002-03	448,384	31,356	61,501	51,217	592,458	3,125	966	171	275	4,537
2001-02	425,079	33,851	56,598	49,824	565,352	3,214	856	175	255	4,500
2000-01	416,607	31,140	53,283	53,169	554,199	3,028	972	177	272	4,449

OVERALL RETENTION	
Academic Year	1st to 2nd Year Retention in: University wide [*]
2009-10	80.3
2008-09	81.0
2007-08	76.4
2006-07	77.8
2005-06	78.9
2004-05	78.4
2003-04	77.1
2002-03	79.3
2001-02	77.7
2000-01	80.3

Academic Year	MAJORS					
	Fall Semester	B	M/S	D_Research	D_Prof	Post Baccalaureate
2009-10	15,362	2,464	1,808	1,491	21,125	336
2008-09	15,025	2,565	1,746	1,402	20,738	405
2007-08	14,697	2,588	1,699	1,339	20,323	465
2006-07	15,467	2,758	1,775	1,201	21,201	401
2005-06	14,881	2,731	1,716	1,144	20,472	438
2004-05	14,471	2,888	1,747	1,097	20,203	581
2003-04	14,366	2,820	1,823	1,058	20,067	590
2002-03	13,919	2,763	1,808	1,049	19,539	572
2001-02	13,455	2,442	1,652	1,002	18,551	771
2000-01	13,046	2,232	1,607	998	17,883	509

^{*}Including Medical Center

GRADUATING SENIOR SURVEYS								
Academic Years	Quality of instruction by Faculty in Major		My advisor is someone I would recommend to other students		Required courses were offered so that I could complete my degree on time		I would recommend my major program to other students	
	Responses	Average ¹	Responses	Average ²	Responses	Average ²	Responses	Average ²
	2007-10	8,296	3.4	8,284	3.7	8,308	3.9	8,307
2006-09	6,389	3.4	6,376	3.7	6,403	3.9	6,401	4.1
2005-08	7,186	3.4	7,165	3.7	7,188	3.9	7,179	4.1
2004-07	6,572	3.4	6,554	3.7	6,580	3.8	6,573	4.0
2003-06	6,835	3.4	6,802	3.7	3,838	3.8	6,826	4.1
2000-03	6,067	3.2	6,131	3.0	6,078	3.0	6,072	3.2
1999-02	5,763	3.3	5,747	2.9	5,767	3.1	5,758	3.2
1998-01	4,625	3.3	4,599	3.0	4,621	3.1	4,616	3.2
1997-00	3,870	3.3	3,843	2.9	3,869	3.1	3,861	3.3

¹ Scale: Four-point Scale: Poor=1 Fair=2 Good=3 Excellent=4.

² Scale: Increases after 2004 are due to a change in the scale. In previous years a four-point scale was used.

For 2004 data, a five-point scale was used: Strongly disagree=1 Disagree=2 Not sure=3 Agree=4 Strongly agree=5.

SPONSORED PROJECTS AND EXPENDITURES

SPONSORED PROJECTS		
Academic Year	Proposals Submitted	Awards Total
2009-10	1,028	\$102,345,777
2008-09	1,000	\$80,063,190
2007-08	902	\$80,128,698
2006-07	965	\$94,789,853
2005-06	1,021	\$95,992,747
2004-05	1,091	\$92,196,905
2003-04	990	\$80,916,875
2002-03	953	\$81,449,719
2001-02	894	\$69,100,619
2000-01	761	\$61,396,344

RESEARCH				
Academic Year	Federal Res. Expenditure	Total Research Expenditure		
		Indirect	Direct	All
2009-10	\$57,206,000	\$13,806,000	\$52,548,000	\$66,353,000
2008-09	\$52,976,000	\$13,068,000	\$50,293,000	\$63,364,000
2007-08	\$57,725,000	\$13,894,000	\$56,057,000	\$69,949,000
2006-07	\$59,341,000	\$13,778,000	\$59,746,000	\$73,526,000
2005-06	\$57,963,000	\$14,155,000	\$58,648,000	\$72,805,000
2004-05	\$54,990,000	\$13,325,000	\$55,473,000	\$68,798,000
2003-04	\$51,886,000	\$12,550,000	\$53,895,000	\$66,445,000
2002-03	\$45,351,000	\$11,276,000	\$42,806,000	\$54,084,000
2001-02	\$37,812,000	\$10,039,000	\$38,123,000	\$48,205,000
2000-01	\$32,297,000	\$8,864,000	\$32,894,000	\$41,758,000

INSTRUCTION				
Academic Year	Federal Ins. Expenditure	Total Instruction Expenditure		
		Indirect	Direct	All
2009-10	\$6,014,000	\$395,000	\$5,944,000	\$6,340,000
2008-09	\$6,081,000	\$351,000	\$6,329,000	\$6,678,000
2007-08	\$6,457,000	\$368,000	\$6,972,000	\$7,339,000
2006-07	\$5,647,000	\$344,000	\$5,737,000	\$6,080,000
2005-06	\$5,586,000	\$387,000	\$5,581,000	\$5,970,000
2004-05	\$5,365,000	\$254,000	\$5,469,000	\$5,722,000
2003-04	\$4,475,000	\$402,000	\$4,888,000	\$5,291,000
2002-03	\$4,872,000	\$344,000	\$5,047,000	\$5,394,000
2001-02	\$3,857,000	\$278,000	\$4,607,000	\$4,883,000
2000-01	\$3,060,000	\$270,000	\$3,699,000	\$3,969,000

PUBLIC SERVICE				
Academic Year	Federal Pub. Expenditure	Total Public Service Expenditure		
		Indirect	Direct	All
2009-10	\$7,348,000	\$1,032,000	\$10,189,000	\$11,219,000
2008-09	\$9,197,000	\$886,000	\$10,907,000	\$11,793,000
2007-08	\$8,300,000	\$750,000	\$10,893,000	\$11,640,000
2006-07	\$8,352,000	\$670,000	\$10,356,000	\$11,026,000
2005-06	\$7,793,000	\$675,000	\$8,474,000	\$9,146,000
2004-05	\$7,277,000	\$493,000	\$9,369,000	\$9,860,000
2003-04	\$5,855,000	\$325,000	\$6,670,000	\$6,995,000
2002-03	\$5,091,000	\$354,000	\$6,297,000	\$6,650,000
2001-02	\$4,466,000	\$369,000	\$5,386,000	\$5,757,000
2000-01	\$3,958,000	\$420,000	\$6,063,000	\$6,484,000

TOTAL EXPENDITURE				
Academic Year	Federal Expenditure	Total Expenditure		
		Indirect	Direct	All
2009-10	\$70,893,000	\$15,236,000	\$69,116,000	\$84,349,000
2008-09	\$68,476,000	\$14,304,000	\$67,983,000	\$82,289,000
2007-08	\$72,650,000	\$15,016,000	\$74,235,000	\$89,255,000
2006-07	\$73,906,000	\$14,793,000	\$76,720,000	\$91,514,000
2005-06	\$71,793,000	\$15,219,000	\$73,209,000	\$88,428,000
2004-05	\$67,948,000	\$14,071,000	\$70,754,000	\$84,824,000
2003-04	\$62,722,000	\$13,270,000	\$66,012,000	\$79,281,000
2002-03	\$55,805,000	\$11,978,000	\$54,718,000	\$66,696,000
2001-02	\$46,718,000	\$10,682,000	\$48,805,000	\$59,483,000
2000-01	\$39,929,000	\$9,558,000	\$43,297,000	\$52,856,000

DIVERSITY OUTCOMES									
Fall Semester	White	Black, nonHispanic	Asian	Hispanic	American Indian	Not Reported	Nonresident Alien	Total	Total Female
Administrative/Executive/Managerial									
2009-10	74	5	3	3	0	0	0	85	38
2008-09	76	5	1	2	0	0	0	84	41
2007-08	80	6	2	1	0	0	0	89	43
2006-07	83	7	1	1	0	0	0	92	38
2005-06	65	2	2	0	0	0	0	69	26
2004-05	63	0	1	0	0	0	0	64	22
2003-04	56	1	1	0	0	0	0	58	22
2002-03	51	0	1	1	0	0	0	53	17
2001-02	50	1	1	1	0	0	0	53	17
2000-01	50	1	1	1	0	0	0	53	16
FT EEO Faculty									
2009-10	989	71	99	20	0	0	44	1,223	460
2008-09	961	64	97	19	0	0	44	1,185	437
2007-08	982	59	117	18	0	0	0	1,176	429
2006-07	970	55	120	16	0	0	0	1,161	414
2005-06	955	54	110	14	0	0	0	1,133	393
2004-05	946	55	104	15	0	3	0	1,123	385
2003-04	947	50	97	12	0	3	0	1,109	375
2002-03	937	50	85	13	1	23	0	1,109	376
2001-02	918	44	80	12	1	22	0	1,077	364
2000-01	930	47	79	9	1	15	0	1,081	356
Undergraduates									
2009-10	13,043	1,057	380	242	34	384	222	15,362	7,810
2008-09	12,951	958	363	205	29	355	164	15,025	7,742
2007-08	12,762	829	327	167	38	437	137	14,697	7,697
2006-07	13,489	865	331	183	18	422	159	15,467	8,142
2005-06	13,115	783	283	163	23	363	151	14,881	7,893
2004-05	12,742	847	260	151	21	287	163	14,471	7,629
2003-04	12,715	793	241	152	17	265	183	14,366	7,513
2002-03	12,343	759	232	124	17	204	240	13,919	7,308
2001-02	11,830	799	252	123	21	151	279	13,455	7,036
2000-01	11,438	806	238	109	20	119	316	13,046	6,784
Graduate Students									
2009-10	3,053	231	88	60	11	177	652	4,272	2,427
2008-09	3,045	233	87	69	10	169	698	4,311	2,484
2007-08	2,788	226	76	61	8	379	749	4,287	2,476
2006-07	3,276	240	83	62	5	424	829	4,919	2,890
2005-06	3,257	255	85	55	7	395	831	4,885	2,871
2004-05	3,527	267	96	53	9	388	876	5,216	3,035
2003-04	3,534	284	96	54	14	361	875	5,218	3,021
2002-03	3,479	277	82	45	16	343	884	5,126	2,935
2001-02	3,364	283	73	35	12	333	746	4,846	2,867
2000-01	3,101	227	58	30	11	328	577	4,332	2,492
Doctor's Degree Professional Practice									
2009-10	1,261	82	52	17	3	58	18	1,491	857
2008-09	1,199	79	39	13	3	55	14	1,402	774
2007-08	1,108	71	36	15	4	86	19	1,339	716
2006-07	1,009	61	28	14	1	76	12	1,201	658
2005-06	977	49	24	14	1	72	7	1,144	613
2004-05	944	53	29	9	2	53	7	1,097	595
2003-04	934	43	33	7	0	35	6	1,058	573
2002-03	919	41	30	11	1	40	7	1,049	582
2001-02	880	34	30	9	2	41	6	1,002	531
2000-01	877	33	20	9	2	47	10	998	514
Postdoctoral Fellow									
2009-10	27	5	13	1	0	10	46	102	31
2008-09	18	5	13	0	0	4	46	86	25
2007-08	11	5	15	0	0	16	30	77	25
2006-07	11	2	6	0	0	23	56	98	30
2005-06	9	2	4	0	0	10	37	62	16
2004-05	10	0	7	0	0	32	69	118	28
2003-04	9	1	9	0	0	41	68	128	31
2002-03	9	1	9	0	0	5	73	97	26
2001-02	20	1	1	0	0	2	85	109	22
2000-01	26	4	0	0	0	2	85	117	22