

# COLLEGE OF AGRICULTURE ANNUAL REPORT 2010

## COLLEGE-WIDE

- Resources to Achieve Top 20 Stature
  - Rankings (Key Indicators 3.1 and 3.3)
    - Academic Analytics and NRC reports are not readily available, nor conducive to national rankings interpretation in the COA. It appears that Plant Pathology and Plant Physiology remain in the top 10 for AA ranking. (3.1)
    - COA ranks 15 in NSF-reported USDA research expenditures in 2010 (3.3)
  - Advancement
    - Endowment Contributed Value increased from \$70.6M in 2009 to \$72.4M in 2010. (Key Indicator 3.2)
    - Total Giving, annual totals

YEAR	2001	2002	2003	2004	2005	2006	2007	2008	2009	2010	TOTAL
\$M	10.9	10.9	4.5	5.0	5.7	14.7	8.4	6.5	5.9	7.5	80.0

- Space and facilities
  - COA space increased from 2.4M (2008) to 2.8M sq ft (2009) (Key Indicator 3.4)
  - Veterinary Diagnostic Laboratory (formerly LDDC) expansion and renovation
  - High visibility enhancements at North Farms for WEG
    - Legacy Trail opened
    - Coldstream Dairy in compliance WQ and Nutrient management
    - Phase I of repro facilities completed at Maine Chance
  - Facilities Management budget balanced through cost reallocation, containment, reduction
- Assessment and accountability
  - Strategic plans completed for all 14 departments and for college
  - First annual reports in new format nearing completion for all departments
  - Performance Review of all college faculty
  - Periodic program reviews completed for PPA and LA, nearing completion for VSC, ENT
  - 16 promotion & tenure cases completed, 21 two-year and four-year faculty reviews completed
  - Revised college Rules of Procedure approved by COA faculty by majority vote and approved by the associate provost for faculty affairs
  - Statements on Evidences of Activity completed for all 14 departments and Statements on Evidences of Activity for Lecturers completed for the 7 departments with lecturers
- Reorganization of MAT department, and HMT/MAT degrees, interim chair appointed, K. Addo
- LA chair search and appointment, N. Crankshaw
- Forestry chair installed, R. Baker

## INTEGRATIVE PROGRAM INITIATIVES

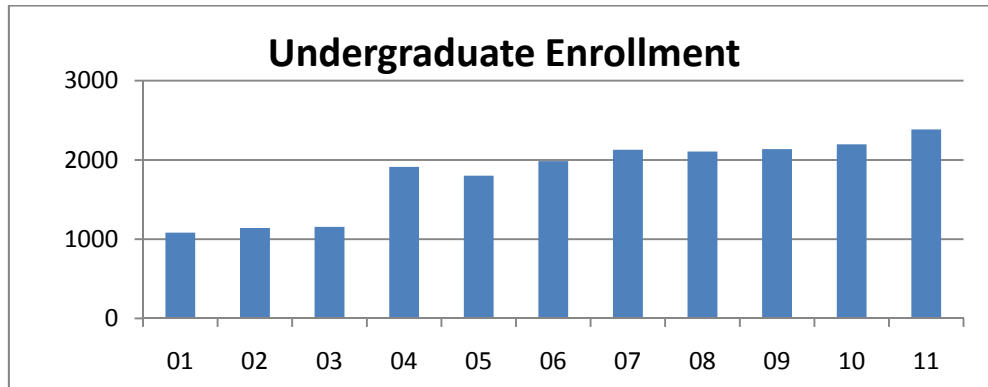
- Equine Initiative
  - UK at the WEG: ~30,000 visitors to anchor UK pavilion, 230 active student prospects (7 countries, 34 states), 271 student, faculty, staff volunteers
  - UG enrollment approximately 170, about 50% out of state
  - Bluegrass Equine Digest, >29,000 on-line subscribers in first year
  - Vet Science outreach, including repro workshops
- Community and Economic Development
  - Community and Economic Development Initiative for Kentucky (CEDIK)
    - Alison Davis and Rick Maurer are primary architects, Davis is first Director
    - Includes a reorganization of extension's "Fourth Program Area," no more Asst. Director for CED
    - Faculty/Staff steering committee formed
    - Successes include: 3 extramural grants, partnership with Tennessee, new agent training programs
  - Managing in Tough Times extension project (MITT)
    - MoneyWise web site developed
    - Jennifer Hunter, Jeanie Davis chair steering committee
- Environment and Natural Resource Initiative
  - Development of Carol Hanley's office, appointment of S. Workman as Director, linkage to TFISE
  - Approved revision of Natural Resource and Environmental Science UG major
  - Continuing discussions about graduate programs
  - Unified College level web pages for ENRI
- Sustainable Ag and Food Systems Working Group
  - December sustainability convocation with invited speakers
  - Food Systems Innovation Center (FSIC) started
    - Provides consulting and tech transfer for food processor start-ups
  - Chef's Afield at South Farm in September
- Kentucky Agricultural Development Fund programs
  - KY Beef Network, Kentucky Horticulture Council, FSIC funded
  - Kentucky Agricultural Leadership Program, approaching \$2M endowment

## DIVERSITY

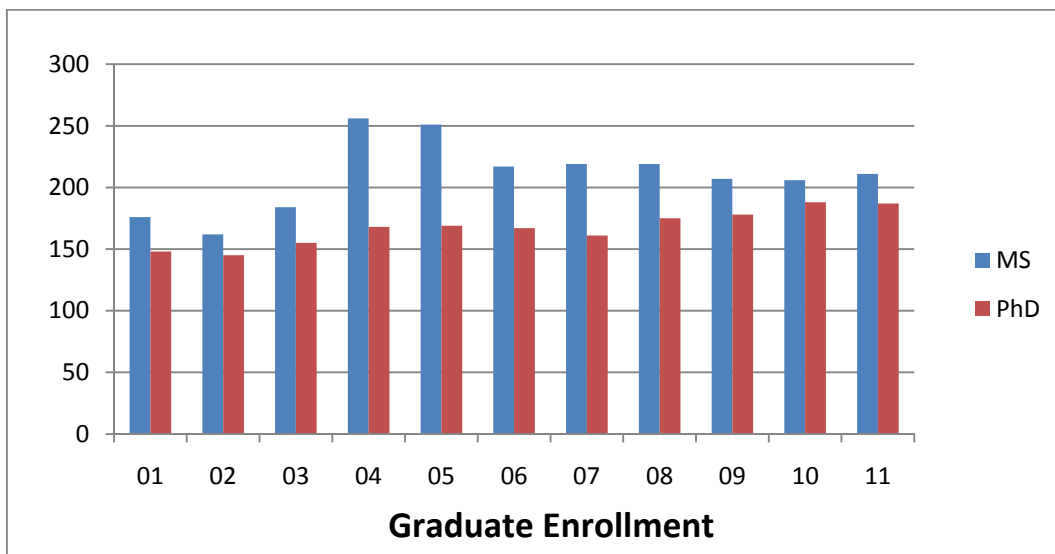
	Baseline	09-10 Report
• <b>Key Indicator 4.1</b> % UG students from underrepresented groups	9%	11.75%
• <b>Key Indicator 4.2</b> % Grad students from underrepresented groups	7%	7% (08-09 data)
• <b>Key Indicator 4.4</b> % Female Faculty	26%	25%
• In preparation for 2011 Federal Civil Rights Audit		

## ACADEMIC PROGRAMS, INSTRUCTION

- UG enrollment increasing continuously



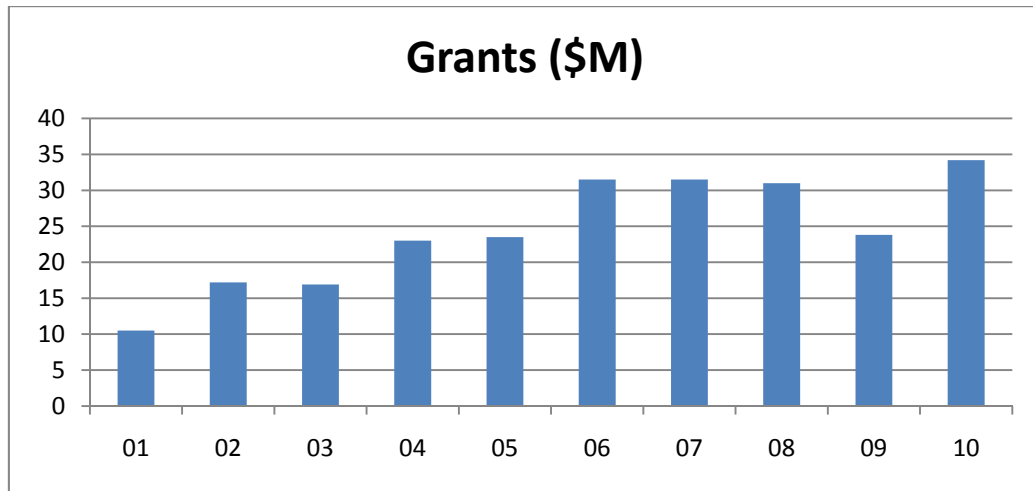
- First-to-second year retention data fell to 72.8% for 08>09, from 74.8% for 07>08 (Key indicator 1.1)
- 3 of 4 UG programs with majors/faculty > 20/1 increased the ratio (CCLD, HMT, NFS), MAT declined from 32/1 to 29/1 (Key indicator 1.2)
- 3 of 5 UG programs targeted for enrollment growth did increase: BAE, Food Sci, and NRC. 2 decreased: FOR 52>47, HPSS 63>44 (Key indicator 1.3)
- All graduate degrees fell to 85 in 2010 from 97 in 2009 but doctoral degrees increased from 24-29 and PhD enrollment is growing slowly (Key Indicator 1.4)



- Final approval of Natural Resources and Environmental Sciences reorganization and curriculum
- Integrated Plant and Soil Sciences graduate program nearing final approval
- Assessment and outcomes
  - Improvement Action Plans completed for all UG programs, in process for graduate programs
  - Assessment Inventories completed for all programs
- COA Residential College initiated in Baldwin Hall

## RESEARCH, EXPERIMENT STATION

- Extramural funding total = \$34.2M, a new high, (among colleges, second only to Medicine) (Key Indicator 2.1)



- Federal competitive funding increased from \$8.0M in 2009 to \$11.6M in 2010, with the % of total grants remaining constant at 34% (Key Indicator 2.2)
  - Chappell's ARRA, \$5M
  - Lead institution on two NIFA CAP proposals: \$45M (global warming), \$25M (childhood obesity)
- 397 refereed journal articles were published in 2009 vs. 407 in 2008 (Key Indicator 2.3)
- Commercialization and IP Development
  - 5 patents were issued to COA faculty in FY 2010, which is the target level (Key Indicator 2.4)
  - Paratechs facility opens in North Lexington, Bruce Webb
  - Allylix poised to release first product line (citrus fragrance), Joe Chappell
  - Gates Foundation grant \$2.4M for risk management strategies, Jerry Skees
  - Reference cigarette operations restructured
- Administration of Centers
  - Kentucky Tobacco Research and Development Center (KTRDC) reorganized, new director
  - Robinson Center for Appalachian Resource Sustainability (RCARS) was created
  - New administrative structure and faculty director position created at Princeton
- Mandated service programs
  - Veterinary Diagnostic Laboratory (formerly LDDC) was fully accredited after a multi-year provisional status
  - UKVDL personnel developed an innovative real-time disease surveillance system of national significance and applicability
  - Accessions at UKVDL were 53,628 for calendar 2009, 9,740 samples at Regulatory Services (Key Indicator 5.4) Both are down significantly from the baseline year, assumed due to the recession
- Partnership with KY Racing Authority and Equine Drug Research Council re-established after multi-year hiatus
  - Partnership in employment of KY Equine Medical Director, Mary Scollay
  - Several hundred thousand in research funding anticipated in 2010-11
  - Equine drug testing: HLF and USEF facilities open

## COOPERATIVE EXTENSION, OUTREACH

- Extension participants reported 307,179 changes in practice, as an outcome of priority CES programs. (Key Indicator 5.1) Priority areas are identified for intensive, targeted, statewide impact assessment as indicated below.

Participants Reporting Practice Change	2009	2010
Farm producers adopting new practices to increase profits	18,437	18,474
4-H Youth acquiring life skills	83,495	98,851
Changing diet and exercise to improve health	50,796	103,541
Leadership development	65,371	58,297
Reducing debt and increasing savings	28,289	28,016
<b>Total</b>	<b>246,388</b>	<b>307,179</b>

- Grants for public service, extension (Key Indicator 5.2)
  - 2010: \$11.6M, 116 awards
  - 2009: \$8.0M, 86 awards
- Dramatic transfer of cost from state to county funds continues
- For FY 2010 contacts totaled 7.7M (Key Indicator 5.3)

Year	Million Contacts	County/State Funds, % of total
2010	7.7	42/31
2009	7.2	44/35
2008	7.2	40/37
2007	7.2	39/38
2006	6.7	37/39
2005	6.4	36/37
2004	6.5	32/37

- Health and Physical Activity
  - HEEL is a semifinalist for a \$25M pending NIFA project on childhood obesity
  - Statewide Second Sunday event expands to 115 counties and 30,000 participants
  - HEEL led Health Literacy KY, a coalition of state universities and agencies. HEEL received more than \$103,000 in external funding for this effort.
  - Literacy, Eating, And Physical Activity for Preschool and Primary School Youth (LEAP) is a Foundation for Health Kentucky designated model program and has been adopted by other states. In 2009-10, 30,933 contacts were made with Kentuckians involved in LEAP.
- KYFarmStart, beginning farmer project, competitively funded and implemented
- Reorganization of Community and Economic Development extension
  - See CEDIK program above
  - Managing in Tough Times project initiated
  - MoneyWise web site
- 4H and Youth Development
  - Participation is at 28% of eligible youth, among the top 5 in the nation
  - 4H camp improvements (including 8 cabins under instruction)
  - Acting 4H Director appointed, Charlene Jacobs
- Asst Director for Program and Staff Development, Kenneth Jones