

2007-2008 Veterinary Science

2007-2008 Degrees Awarded

		Male	Female	Minority	African American
Doctoral	2	1	1	0	0
Master's	1	0	1	0	0
Total	3	1	2	0	0

Degrees Awarded Five-Year Trend

	2003-2004	2004-2005	2005-2006	2006-2007	2007-2008
Doctoral	3	3	2	6	2
Master's	2	4	3	1	1
Total	5	7	5	7	3

2007-2008 Enrollment

		Male	Female	Minority	African American
Doctoral	17	7	10	0	0
Master's	4	1	3	0	0
Post-doc	6	2	4	0	0
Total	27	10	17	0	0

Enrollment Five-Year Trend

	2003-2004	2004-2005	2005-2006	2006-2007	2007-2008
Doctoral	18	18	19	19	17
Master's	7	8	7	3	4
Post-doc	4	7	9	10	6
Total	29	33	35	32	27

2007-2008 Student Credit Hours Enrolled

		SSI	SSII	Fall	Spring
Total	243	*	7	119	117

Direct Awards Five-Year Trend

2003-2004	2004-2005	2005-2006	2006-2007	2007-2008
\$773,596	\$734,221	\$1,147,627	\$885,894	\$766,195

Faculty/Primary Grant Dollar Ratio

	FT Fac (head count)	FTE Research Faculty
	21	17.85
Total Primary Grant Dollars	\$766,195	\$766,195
Average	\$36,485	\$42,924

Research Faculty With Formula Funded Projects as of 2/08

25% or higher research DOE	16
Active Project	16
Percentage	100%

2007-2008 Fiscal Year Grants

Direct Awards	\$766,195
Federal Competitive	\$0
% Federal Competitive	0%
Collaborative	\$1,366,463

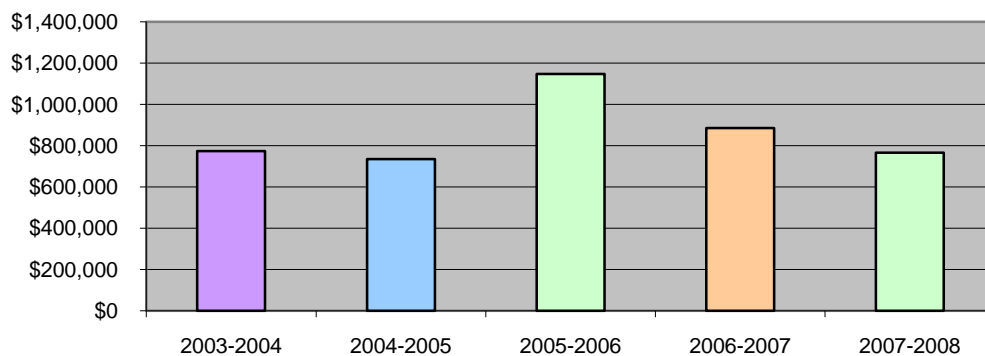
2007 Calendar Year Publications

Books & Chapters	8
Refereed Journal Articles	40
Other Research	27
Total	75

2007 Calendar Year Patents

	1
--	---

Direct Awards Five-Year Trend



*Data for Summer I are not available